

Diamond  Farms

Sustainable Genetics PRODUCTION SALE

May 1, 2010 • 1:00 PM

Chatham, Virginia
(Between Roanoke & Gretna)



GUEST CONSIGNOR
Hilltop Farms, Christiansburg, Virginia

Welcome to Diamond S Farms, located in the foothills of the Blue Ridge Mountains on 2000 owned and leased acres. The headquarters in Union Hall, Virginia focuses on producing trouble-free sustainable beef genetics and performance Quarter Horses. The Diamond S cattle program includes purebred Angus, purebred Braunvieh and a sizable commercial cow herd. Our goal for 50 years of breeding cattle has been to promote "sustainable genetics for the commercial cattleman". We focus on the traits that keep you in business such as fertility, performance and longevity. We demand that our cattle excel in a low input forage based system.

Diamond S Farms was founded in 1939 by Harry and Lottie Shelton. The original farm has been in the family since a royal land grant in 1771 from King George III of Great Britain to Thomas Ramsey Sr., dated August 3, 1771, whose descendent Marion Ramsey married John Shelton November 17, 1892. Tobacco was the primary cash crop for Harry and his son, Ronnie, who farmed together until Harry's death in 1968. Ronnie and his wife Mildred expanded the total acreage and added beef cattle in 1960 and currently run the operation with their son and his wife, Eddie and Debbie Shelton and their daughter Jesse. Matt Manbeck joined the operation in 2007 as herdsman. With the primary emphasis involving both beef cattle and Quarter Horses, the Diamond S brand was registered with the state of Virginia in 1989 to identify the quality of stock that the Shelton's are dedicated to producing for the industry.



EDDIE, DEBBIE, JESSE SHELTON



LIL MISSY STARLIGHT



WRA MIRROR IMAGE T10

The Quarter Horse operation uses embryo transfer, shipped semen and artificial insemination to be able to breed to the best stallions in the Quarter Horse industry. Brood mares are selected based on conformation, lineage and performance in the cutting arena as well as produce record. Mares are only retained as brood mares if they have money earnings in competition and/or produce money earners. Horses owned or bred by Diamond S Farms have earned over \$300,000. Both yearlings and trained cutting horses are marketed for sale as well as quality broke ranch horses used in all facets of cattle ranching.

The purebred Angus program also incorporates embryo transfer, AI and utilizes AHR to incorporate a stringent record keeping system to evaluate each generation. The base cow herd was established from genetics selected from programs with the same ideals and management systems throughout the country including but not limited to; Ohlde Cattle Co., KS, Mystic Hill Farm, VA, Lazy Lane Farm, VA, Dalton's On Sycamore, Cotton Angus, SD and White Ridge Angus, VA.

The Braunvieh breed was introduced into the program to provide customers with the benefits of heterosis through crossbreeding. The Braunvieh breed is one of the oldest PURE breeds of cattle dating back to the Bronze Age and offer added muscle, milk, fertility with proven feed efficiency. The program was established through the purchase of two very elite females in MHF Remington and MHF Madison.



RONNIE & MILDRED SHELTON



MHF MADISON



DSF H437 EMBLAZON 719



Diamond S Farms

Sustainable Genetics Production Sale

May 1, 2010 • 1:00 PM • Chatham, Virginia

Guest Consignor: Hilltop Farms, Christiansburg, Virginia

Video Preview:

Go to www.diamondslivestock or www.brubakersales.com for video preview of sale cattle.

Sale Day Phones:

Sale Facility 434/724-7266
Ken Brubaker 540/908-5799
Eddie Shelton 540/420-3813
Mike Sowers 540/392-2993
Matt Manbeck 717/821-8176

Sale Staff:

Ken Brubaker, Auctioneer, 540/908-5799
Charlie Strickler, Special Assignment
Jeff Marsh, Special Assignment
Bobby Grove, Special Assignment

Sale Location:

Diamond S Farms- Pittsylvania Division
748 Museville Rd., Chatham, Virginia 24531
From Rocky Mount, VA – approx. 21 miles
From Gretna, VA – approx. 14 miles
(See map on the inside back cover)

Sale Headquarters:

Holiday Inn Express
395 Old Franklin Trnkp • Rocky Mount VA 24151
540/489-5001

Real Time Teleconference Bidding:

Buyers unable to attend the sale can participate during the sale with a live teleconference line. You can bid on your selections with other buyers, as if you were at the auction. Teleconference buyers must pre-register with Brubaker Sales & Marketing prior to the auction to receive a buyer's number and phone numbers. Call 540/908-5799 at least one hour prior to the sale.

Terms & Conditions:

Cattle will sell under the standard Terms and Conditions as adopted by the American Angus Association. All cattle must be paid for prior to leaving the sale facility. Terms are cash or check with proper identification. Cattle purchased via phone bid or on order must be paid for before shipping. Any bidding disputes will be settled by the auctioneer.

Diamond S Farms

Angus & Braunvieh • Cutting Horses

Eddie, Debbie, Jesse Shelton
411 Bucksrape Road • Union Hall, VA 24176
540/576-1223 • diamondsfarms@earthlink.net
www.diamondslivestock.com
Matthew Manbeck, Herdsman • 717/821-8176

Delivery & Transportation:

Truckers believed to be reliable will be available to assist buyers in transportation of their purchases. Owners and sale manager will assist buyers in coordinating trucking for least-cost loads to their farm or a central location.

Herd Health:

Both Diamond S Farms and Hilltop Farms practice sound vaccination programs. A State Health Certificate will be provided and cattle will be ready for interstate shipment.

Genetic Defects:

A few cattle in this offering have been identified tracing to known carriers of AM and NH genetic defects. These cattle have been tested via DNA to be free of the disorders and sell as such.

Liability:

All persons attending the sale do so at their own risk. Owners and sale managers assume to responsibility for injury or damage to property.

Complimentary Lunch:

A complimentary lunch will be served prior to the sale.

Inspection of Sale Offering:

Cattle will be available at the sale facility for inspection, Friday, April 30th. Cattle are available prior to the sale at their respective farms, please contact the owners to arrange an appointment.

Announcements & Supplemental Information:

Updated pregnancy information and sale updates will be provided on sale day. Any announcements made from the sale block will take precedence over any printed information.

EPDs

The EPDs represented in this book were current at the time of printing from the American Angus Association. Updated EPDs can be viewed online at www.angus.org.

Sale Book Prepared by:

Brubaker Sales & Marketing LLC, Homestead Graphics & Boelte-Hall LLC

Sale Managed By:



Ken Brubaker
5815 N. Valley Pike
Harrisonburg, VA 22802
540/908-5799 • ken@brubakersales.com

Guest Consignor:

Hilltop Farms

Mike Sowers
PO Box 6082 • Christiansburg, VA 24068
540/392-2993 • 540/382-1551



Diamond Farms

Angus & Braunvieh • Cutting Horses
Eddie & Debbie Shelton
411 Bucksrape Road • Union Hall, VA 24176
Phone (540) 576-1223 • Fax (540) 576-3756
Matthew Manbeck – Herdsman (717) 821-8176
diamondsfarms@earthlink.net

Dear Friends & Cattle Producers,

Welcome to our inaugural sale. We appreciate your interest in our program and hope that you will find cattle in this offering that will help your program. We stand behind these cattle 100%.

It has been a long hard winter and we are impressed but not surprised how these cattle have made it through extreme conditions. These cattle are hard to part with as they are a result of many of our foundation bloodlines – bloodlines and cow families that have proven themselves on our ranch and have proven themselves around the country.

This offering represents cattle at the very top of our production and replacement pens. We invite both Purebred and Commercial Cattlemen alike, as there is something for everyone included in the sale. To our commercial producers, we think you will like the top cut of herd sires for sale, as well as a exceptional offering of Angus and Angus x Braunvieh VQA heifers that will provide instant profit to any program.

For 50 years the Diamond S program has been founded upon sustainable genetics. Cattle that never fall out of favor due to industry fads or trends, rather hold their value based on their production and performance accomplishments in a low-input least cost management model.

We hope you can attend our sale and enjoy some Virginia hospitality. There is a great amount of history very close by that you and your family can enjoy, as well as, the great Smith Mountain Lake which is right next door.

Spring has sprung here in Virginia and we look forward to a celebration with old friends and customers, as well as making new friends and customers.

Sincerely,

The Shelton Family



Ken Brubaker
5815 N. Valley Pike • Harrisonburg, VA 22802
540/908-5799 • ken@brubakersales.com

Dear Cattlemen,

Welcome to the inaugural Diamond S Sustainable Genetics Production Sale. It has been my pleasure to work with the Shelton Family for several years now and watch the metamorphosis of a program being put together. This is indeed a program built upon solid foundations and ideals of producing profitable cattle for all segments of the industry.

We welcome Mike Sowers of Hilltop Farms with an exceptional offering of time-tested genetics all of which trace to the pillars of the Angus Breed. Mike's commitment to problem-free genetics that work on grass and function in a natural environment is second to none. Mike recently lost his father, Clinton Sowers. Clinton was a hero to Mike and all who knew him.

I highly recommend this offering of elite Angus and Braunvieh Genetics. The genetic foundation of this offering is time-tested and proven from coast-to-coast and border-to-border. You will not be disappointed with the value they will add to your program.

If you cannot attend, please contact us to make use of the Teleconference line or to submit your bids. We will be happy to assist you with selection.

Best Regards,

Ken Brubaker



**Video Preview
Available At
www.diamondslivestock.com
and
www.brubakersales.com**

DIAMOND FALL CALVING COWS

1

DSF H437 EMBLAZON 719

Calved: 02/03/2007 Cow 15824745 Tattoo: 719

#DHD Traveler 6807 [AMF-NHF]
#+OCC EMBLAZON 854E
 #+12514348 Dixie Erica of CH 1019

#QAS Traveler 23-4 [AMF-NHF]
 #Bemindful Maid DHD 0807
 #PBC 707 1M F0203
 Dixie Erica of CH 615

#N Bar Emulation EXT [AMF-NHF]
HYLAND BLACKCAP 0437
 14855069 Blackcap of Volga 2037

#Emulation N Bar 5522
 N Bar Primrose 2424
 Leroy of Volga 9874
 Blackcap of Volga 9346

BEPD		WEPD		YEPD		MILK	
+1.6	.33	+42	.25	+72	.24	+12	.20

- ◆ AI Bred 11/30/09 to Sinclair Extravagant 6X7, pasture bred 12/15/09-2/3/09 DSF Right Time 39U. Sells Safe
- ◆ An exciting own daughter of the very popular "Emblazon" and out of the Lot 7 cow in the offering.
- ◆ She is real cow material with a flawless phenotype and has done an exceptional job with her first calf. Her dam was produced in the Hyland South Dakota program and has been a highly fertile cow with a calving interval of 363 days on 5 head.
- ◆ She is the product of one of the most successful genetic blends the breed has known with "6807" and "EXT".



DSF H437 Emblazon 719 - Lot 1
Hyland Blackcap 0437
Dam of Lot 1



2

DSF MISS SKYMERE 815 5114

Calved: 10/02/2007 Cow 16111473 Tattoo: 815

+OCC Focus 813F
#OCC HOMER 650H
 #13235197 +OCC Dixie Erica 816B

#Basin Rainmaker 654X
 Dixie Erica of CH 1019
 #DHD Traveler 6807 [AMF-NHF]
 Dixie Erica of CH 1019

#+OCC Emblazon 854E
DSF I148 EMBLAZON 5114
 15473671 +Blue Ridge Miss Skymere 1148

#DHD Traveler 6807 [AMF-NHF]
 Dixie Erica of CH 1019
 #Sitz Traveler 9929
 +Whitstone Miss Skymere 3032

BEPD		WEPD		YEPD		MILK	
+9	.32	+42	.24	+69	.23	+17	.20

- ◆ AI Bred 11/30/09 to Sinclair Extravagant 6X7, pasture bred 12/15/09-2/3/09 DSF Right Time 39U. Sells Safe
- ◆ An exceptional "Homer" x "Emblazon" that traces to the long-time Whitestone Donor, Mengs Miss Skymere 275.
- ◆ This young cow has power and rib with the fleshing ability that cattlemen are looking for.
- ◆ Her dam has been an exceptional producer with progeny ratios of 2@107 weaning, 1@101 yearling



OCC Homer 650H - Sire of Lot 2

3

MARGARET OF VOLGA 0348

Calved: 03/04/2003 Cow 15260194 Tattoo: 0348

#Emulation N Bar 5522
#N BAR EMULATION EXT [AMF-NHF]
 #10776479 N Bar Primrose 2424

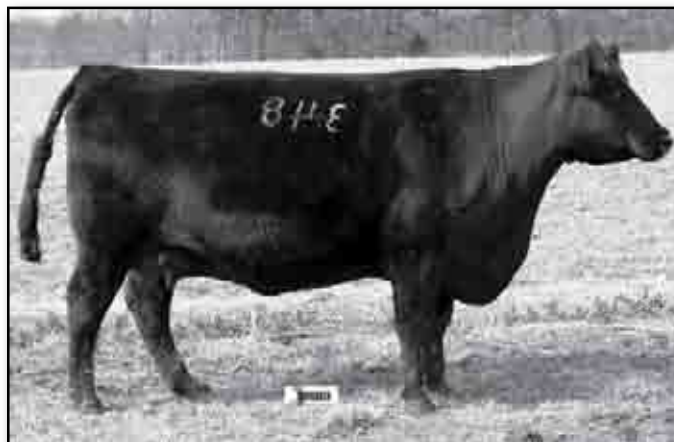
#Emulation 31 [DWF-RDF]
 Ankony 8F78 Lass 8F275
 #Emulation 31 [DWF-RDF]
 Primrose N Bar 9962

Jason of Volga 9354
MARGARET OF VOLGA 9706
 12860868 Margaret of Volga 8809

#Rambler of Volga 2136
 #Margaret of Volga 9009
 #Leonid of Wye
 Margaret of Volga 1819

BEPD		WEPD		YEPD		MILK	
+5	.39	+37	.29	+63	.29	+15	.28

- ◆ AI Bred 12/8/09 to WRA Mirror Image T10, pasture bred 12/11/09-2/3/10 to DSF Missing Link 813 451
- ◆ An own daughter of the legendary "EXT". She was the top pick of the Cotton Angus program in SD.
- ◆ She is represents foundation WYE and Jorgenson breeding with a 3rd dam an own daughter of Rito 149.
- ◆ An easy fleshing power cow to boost your program's genetic potential.



Margaret of Volga 0348 - Lot 3

4

DSF 1520 TREASURE 004 718

Calved: 01/28/2007 Cow 15824742 Tattoo: 718

Ginger Hill Treasure 8018
GINGER HILL TREASURE 2004
 14456967 Ginger Hill Dawn 631

#WRA Treasure D1
 GDAR Forever Rose 8196
 #+Ginger Hill 6807 Traveler 23 [RTF]
 Ginger Hill Dawn 154

Ginger Hill Treasure 8018
GINGER HILL HELEN 1520
 14150452 Ginger Hill Helen 8506

#WRA Treasure D1
 GDAR Forever Rose 8196
 +Ginger Hill 6807 Traveler 93
 +Llewellyn Helen 056

BEPD		WEPD		YEPD		MILK	
+3.3	.32	+45	.22	+81	.21	+18	.13

- ◆ AI Bred 11/30/09 to OCC Missing Link 830M, pasture bred 12/15/09-2/3/10 to DSF Right Time 39U
- ◆ A daughter of the top-producing "Helen 1520" who records progeny ratios of 5@104 weaning, 5@103 yearling and a 105 REA on 2 head.
- ◆ This young cow provides added growth and maternal power.



Ginger Hill Helen 1520 - Dam of Lot 4



DIAMOND S FALL CALVING COWS



OCC Missing Link 830M - Service Sire of Lot 5



Duff Standout 785 - Service Sire of Lot 6



Hyland Blackcap 0437 - Lot 7

5

DSF MH340 0524 722

Calved: 03/17/2007 Cow 15922979 Tattoo: 722
 +Lukens New Time 1T23 #+Leachman Right Time
 MYSTIC HILL NEW TIME 0524 +Lukens Forever Lady J463
 15300946 Mystic Hill June 901 #Basin Rainmaker 814Z [AMF]
 Mystic Hill June 722
 Mystic Hill Traveler 0105 +Mystic Hill Traveler 8T17
MYSTIC HILL ELBA 340 [AMF] Mystic Hill Ellen 935
 14645237 Mystic Hill Elba 861 #Gardens Prime Time [AMF-NHF]
 Mystic Hill Elba 569

BEPD	WEPD	YEPD	MILK
+2.1	.28	+39	.17

- ◆ AI Bred 11/30/09 to OCC Missing Link 830M, pasture bred 12/15/09-2/3/10 to DSF Right Time 39U
- ◆ A powerful pedigree that blends the benefits of "Right Time", "Rainmaker", "6807" and "Prime Time".
- ◆ Her dam records a progeny WWR of 4@113. Good cow here!

6

DSF 980 131 724

Calved: 03/25/2007 Cow 15903158 Tattoo: 724
 #Sitz Alliance 6595 [AMF-NHF] #Sitz Traveler 8180 [AMF-NHF]
GAAF 6D3 131 #Sitz Barabamere Jet 2698
 13901292 GAAF 6N1 1418 6D3 #Ideal 1418 of 8103 4286 [AMF-NHF]
 MS Gaaf 5838 Pine Drive 6N1
 +YA Equanox 629 #Papa Equator 2928 [AMF-NHF]
DALTONS BLACKBIRD 980 #YA Rito Black Belle 47 Rita
 13465040 Papa Blackbird 4903 Sitz Traveler 5338
 Papa Blackbird 1915

BEPD	WEPD	YEPD	MILK
+2.9	.29	+40	.19

- ◆ AI Bred 11/30/09 to Duff Standout 785, pasture bred 12/15/09-2/3/10 to DSF Right Time 39U
- ◆ She traces to a cow family bred in the Legendary Dale Davis, PAPA, program in Montana.
- ◆ Foundation and sustainability top and bottom.

DIAMOND S SPRING PAIRS

7

HYLAND BLACKCAP 0437

Calved: 02/21/2004 Cow 14855069 Tattoo: 0437
 #Emulation N Bar 5522 #Emulation 31 [DWF-RDF]
#N BAR EMULATION EXT [AMF-NHF] Ankony 8F78 Lass 8F275
 #10776479 N Bar Primrose 2424 #Emulation 31 [DWF-RDF]
 Primrose N Bar 9962
 Leroy of Volga 9874 Monsoon of Volga 9643
BLACKCAP OF VOLGA 2037 Lara of Volga 8920
 13750048 Blackcap of Volga 9346 Hutch of Volga 9157
 Blackcap of Volga 8602

BEPD	WEPD	YEPD	MILK
+8	.40	+33	.29

- ◆ Sells with her 3/9/10 heifer calf, Lot 7A, by DSF 8T0 24J 5108
- ◆ This "EXT" daughter traces on the bottom side to foundation WYE and Jorgensen lines.
- ◆ Bred in the Hyland program in SD, she is a moderate framed cow with tremendous fleshing ability and power.
- ◆ The dam of the Lot 1 and Lot 7B feature lots with an exceptional heifer calf at side.

7B

DSF BLACKBIRD 874 H437

Calved: 02/27/2008 Cow 16301709 Tattoo: 874
 #BAR Ext Traveler 205 [AMF-NHF] #N Bar Emulation EXT [AMF-NHF]
NEALA TRAVELER 404 #BAR Queen Traveler 3015
 15105633 #Mystic Hill Miss Rito 273 #AAR Really Windy 1205 [AMF-NHF]
 Mystic Hill Genesis 055
 #N Bar Emulation EXT [AMF-NHF] #Emulation N Bar 5522
HYLAND BLACKCAP 0437 N Bar Primrose 2424
 14855069 Blackcap of Volga 2037 Leroy of Volga 9874
 Blackcap of Volga 9346

BEPD	WEPD	YEPD	MILK
+3	.31	+32	.20

- ◆ Sells with her 2/21/10 heifer calf, tag 7B, by Mystic Hill New Time 0524
- ◆ A daughter of the Lot 7 feature and sister to Lot 1 feature females in the offering.
- ◆ Double-bred "EXT" while tracing to foundation sustainable gene pools from the WYE and Jorgensen programs.
- ◆ Excellent maternal package with a future brood cow at side.



Bring This
Catalog To The Sale!



DIAMOND SPRING PAIRS

8

DSF BLACKBIRD 832 03

Calved: 11/09/2007 Cow 16111461 Tattoo: 832

#Emulation N Bar 5522
#N BAR EMULATION EXT [AMF-NHF]
#10776479 N Bar Primrose 2424

#Emulation 31 [DWF-RDF]
Ankony 8F78 Lass 8F275
#Emulation 31 [DWF-RDF]
Primrose N Bar 9962

#VDAR Bando 701

#Tehama Bando 155 [AMF-NHF]
VDAR Beauty 228
#DHD Traveler 6807 [AMF-NHF]
Mystic Hill Blackbird 423

MYSTIC HILL BLACKBIRD 03
13805906 +Mystic Hill Blackbird 8T2

BE PD	WE PD	YE PD	MILK
+1.7	.34	+35	.26
+72	.25	+16	.21

- ◆ Sells with her 1/30/10 heifer calf, Lot 8A, by WRA Mirror Image T10
- ◆ Maternal genetics with power blending "EXT", "Bando 701" and "6807".
- ◆ Great young maternal package with a heifer calf by the \$10,000 valued "Mirror Image"



N Bar Emulation EXT - Sire of Lots 3, 7 & 8

9

DSF SKYMERE 817 5121

Calved: 10/16/2007 Cow 16138129 Tattoo: 817

#BAR Ext Traveler 205 [AMF-NHF]
NEALA TRAVELER 404
15105633 #Mystic Hill Miss Rito 273

#N Bar Emulation EXT [AMF-NHF]
#BAR Queen Traveler 3015
#AAR Really Windy 1205 [AMF-NHF]
Mystic Hill Genesis 055

#OCC Homer 650H

+OCC Focus 813F
+OCC Dixie Erica 816B
#N Bar Emulation EXT [AMF-NHF]
Whitestone Skymere L097

DSF N065 HOMER 5121
15467800 Skymere N065 of Whitestone

BE PD	WE PD	YE PD	MILK
-.4	.29	+34	.19
+74	.17	+23	.11

- ◆ Sells with her 2/3/10 herd sire prospect, Lot 9A, by WRA Mirror Image T10
- ◆ A can't miss pedigree of proven sustainable genetics blending "6807", "EXT" and "Really Windy".
- ◆ Traces to the long-time Whitestone Donor, Mengs Miss Skymere 275.



WRA Mirror Image T10 - Sire of Lots 9A, 10A & 11A

10

DSF BEAUTY 822 5106

Calved: 11/04/2007 Cow 16138130 Tattoo: 822

#BAR Ext Traveler 205 [AMF-NHF]
NEALA TRAVELER 404
15105633 #Mystic Hill Miss Rito 273

#N Bar Emulation EXT [AMF-NHF]
#BAR Queen Traveler 3015
#AAR Really Windy 1205 [AMF-NHF]
Mystic Hill Genesis 055

+Mystic Hill Bando 9T15

#VDAR Bando 701
#Papa Mabel 9855
Sitz Traveler 8562
#Liberty Beauty 383

DSF 412H 9T15 5106
15467806 Sugar Loaf Beauty 412H 8562

BE PD	WE PD	YE PD	MILK
-.1	.29	+26	.19
+57	.11	+27	.10

- ◆ Sells with her 1/29/10 herd sire prospect, Lot 10A, by WRA Mirror Image T10
- ◆ 8 Pathfinders round out this young female's 3-generation tabulation providing her with all the credentials to mature into a valued brood cow.
- ◆ From a grand dam produced in the Sugar Loaf program and traces back to the highly valued Liberty Beauty 383 Pathfinder.



Mystic Hill Bando 9T15 - MGS of Lot 10

11

DSF BLACKBIRD 866 349

Calved: 01/07/2008 Cow 16301708 Tattoo: 866

#Sitz Alliance 6595 [AMF-NHF]
GAAF 6D3 131
13901292 GAAF 6N1 1418 6D3

#Sitz Traveler 8180 [AMF-NHF]
#Sitz Barabamere Jet 2698
#Ideal 1418 of 8103 4286 [AMF-NHF]
MS Gaaf 5838 Pine Drive 6N1

Ginger Hill Romeo 0015

Ginger Hill Treasure 8018
Ginger Hill Lucy 145
#+Ginger Hill 6807 Traveler 23 [RTF]
Ginger Hill E Blackbird 8531

GINGER HILL BLACKBIRD 349
14743776 Ginger Hill E Blackbird 1536

BE PD	WE PD	YE PD	MILK
+3.4	.31	+44	.20
+80	.18	+24	.10

- ◆ Sells with her 2/5/10 heifer calf, Lot 11A, by WRA Mirror Image T10
- ◆ Here's a powerful 2-year old nursing her first heifer calf that will make your short list.
- ◆ Dam has been a strong producer with progeny WR of 3@109 and YR 2@108.
- ◆ Add growth in this cow as noted by her EPD expression.



Ginger Hill Blackbird 349 - Dam of Lot 11



HT HILLTOP SPRING PAIRS



N Bar Explosion - Grandsire of Lot 12



Sitz Alliance 6595 - Sire of Lot 15

12 MISS HT 5110 6230 822

Calved: 02/01/2008		Cow 16300345		Tattoo: 822	
#N Bar Explosion		#N Bar Emulation EXT [AMF-NHF]			
HT EXP 3216 EXP 5110		N Bar Kinochtry Beauty 4288			
15187821		Miss MWS Rito 0221 024 3216 [AMF]		MWS Rito 803 625 0221	
		Miss MWS Rito 820D F014 024			
MWS Rito 115 2115 4213		DCC Rito Prime 115 [AMF-NHF]			
MISS HT 4213 2122 6230 [AMF]		Miss MWS Rito 9V3 721 2115			
15628643		Rito 931 of 85 A63			
Miss MWS Rito 931 7112 2122 [AMF]		Miss MWS 033 5217 7112			
BEPD	WEPD	YEPD	MILK		
+1.0	.32	+32	.20	+57	.19
				+24	.08

- ◆ Sells with her 2/25/10 herd sire prospect, Lot 12A, by HT Open Range 2122 718
- ◆ She stems from the highly regarded "2122" who has been a long-lived producer with progeny ratios of 5@97 BW, 5@100 WN, 6@102 YW and a calving interval of 363 days on 6 head.

15 MISS HT SITZ 6595 3119 617

Calved: 01/26/2006		Cow 15628633		Tattoo: 617	
#Sitz Traveler 8180 [AMF-NHF]		#GDAR Traveler 71 [AMF-NHF]			
#SITZ ALLIANCE 6595 [AMF-NHF]		Sitz Everelda Entense 1137			
#12310707		#Sitz Barabamere Jet 2698			
		#Sitz Baramere Jet 155			
#N Bar Prime Time D806 [AMF-NHF]		#Gardens Prime Time [AMF-NHF]			
MISS MWS RITO N-BAR D806 122		N Bar Miss Emulous A404			
14428891		Rito 931 of 85 A63			
Miss MWS Rito 717 931 1225		Miss MWS 033 511 717			
BEPD	WEPD	YEPD	MILK		
+3.5	.34	+44	.25	+81	.25
				+23	.20

- ◆ Sells with her 1/26/10 herd sire prospect, Lot 15A, by Sinclair Momento 7RL4
- ◆ An own daughter of the highly regarded Pathfinder Sire, "6595", and out of a highly productive "D806" dam.
- ◆ Her dam posts a progeny WWR of 2@102 and YWR 2@106

13 MISS HT 4213 2122 6230

Calved: 02/24/2006		Cow 15628643		Tattoo: 6230	
DCC Rito Prime 115 [AMF-NHF]		#Rito 616 of 4B20 6807 [AMF-NHF]			
MWS RITO 115 2115 4213		DCC Rita 482 of D806 185			
14966840		Miss MWS Rito 9V3 721 2115		+Rito Intensifier 9R3	
		Miss MWS T100 372 721			
Rito 931 of 85 A63		Ideal 85 of Rito 549 6277			
MISS MWS RITO 931 7112 2122 [AMF]		Rito Majesty 5A63 of 809			
14334372		Miss MWS 033 5217 7112		#Ideal 033 of 7365 8263	
				Miss MWS C024 231 5217	
BEPD	WEPD	YEPD	MILK		
+2.4	.35	+31	.23	+60	.21
				+25	.16

- ◆ Sells with her 1/23/10 heifer calf, Lot 13A, by Sinclair Momento 7RL4. AI bred 4/12/10 to OCC Magnitude 805M
- ◆ She stems from the same cow family as Lot 12.
- ◆ Foundation, time-tested genetics top and bottom of the pedigree.

16 MISS HT RITO 3110 033 612

Calved: 01/01/2006		Cow 15668063		Tattoo: 612	
Rito Traditionalist 0D15		+Ideal 7290 of 809 3134			
MWS RITO 0D15 F014 3110		Lisnagers Miss Barbara 402			
14437394		WH F014 Edella D104-2000		#Minerts Fortune 2000 [AMF-NHF]	
				#WH D104 DS Edella A059 A036	
+Alfaros Rito Traveler 803		#DHD Traveler 6807 [AMF-NHF]			
MISS MWS RITO 803 5220 033		+Rita 2T1 of 5H11 Rito 149			
13591559		Miss MWS G45 E10 5220		JEH Rito G45	
				JEH Rita E10	
BEPD	WEPD	YEPD	MILK		
+4.9	.35	+37	.23	+72	.21
				+28	.16

- ◆ Sells with her 4/1/10 herd sire prospect, Lot 16A, by Sinclair Momento 7RL4
- ◆ A top producer with a progeny WR of 117 and YR 110.
- ◆ Foundation genetics tracing to the pillars of the Angus breed.

14 MISS HT 522 4227 7213

Calved: 02/19/2007		Cow 15959714		Tattoo: 7213	
+Sinclair Net Present Value [AMF-NHF]		#N Bar Prime Time D806 [AMF-NHF]			
HT NPV 271 3215 522		+Ideal 4465 of 6807 4286 [AMF-NHF]			
15115886		Miss MWS Rito 9V3 9229 271 [AMF]		+Rito Intensifier 9R3	
		Miss MWS Rito 422 232 9229			
Rito 931 of 85 A63		Ideal 85 of Rito 549 6277			
MISS MWS RITO 931 0D1 4227 [AMF]		Rito Majesty 5A63 of 809			
14961781		Miss MWS Rito 232 836 0D1		MWS Rito 415 0N8 836	
				Miss MWS Rito 9T2 MM4542 232	
BEPD	WEPD	YEPD	MILK		
+4.3	.32	+50	.20	+77	.19
				+24	.09

- ◆ Sells with her 1/29/10 herd sire prospect, Lot 14A, by Sinclair Momento 7RL4
- ◆ Her dam has been one of the good ones with a progeny WR of 2@111, YR 2@106
- ◆ She traces to many of the foundation Angus genetics the breed has been built on.



Sinclair Net Present Value - Grandsire of Lot 14

HT HILLTOP SPRING PAIRS

17 MISS HT 878 432 6213

Calved: 02/06/2006 Cow 15665068 Tattoo: 6213
 #B/R New Design 036 [AMF-NHF] #VDAR New Trend 315 [AMF-NHF]
#BON VIEW NEW DESIGN 878 [AMF-NHF] B/R Blackcap Empress 76
 #13062750 Bon View Gammer 85 #Bon View Bando 598 [AMF]
 Bon View Gammer 233

N Bar Line 2SCC 2F7
MISS MWS RITO 2F7 273 432
 14962295 Springwood Belle 273

BEPD	WEPD	YEPD	MILK
+1	.35	+32	.25
+61	.25	+21	.19

- ◆ Sells with her 1/28/10 heifer calf, Lot 17A, by Sinclair Momento 7RL4, AI bred 4/12/10 to OCC Magnitude 805M
- ◆ By the popular ABS record semen seller, "878", and out of a dam bred in the Springwood herd in Buchanan, VA.
- ◆ Daughter sells as Lot 37.



Bon View New Design 878 - Sire of Lot 17

18 MISS HT 816 1T8 542

Calved: 04/05/2005 Cow 15114344 Tattoo: 542
 Rito 72 of Ideal 033 #Rito 707 of Ideal 836 71
+RITO TRADITION 1T8 Rito 707 of Ideal 815 70
 +14037290 +Rita 6D52 of Rita 2T6 7174 #Band 116 of Ideal 2118 7174
 +Rita 2T6 of 5H11 Rito 149 [AMF]

#Rito 3B17 of 0G10 Bando [AMC] #Tehama Bando 155 [AMF-NHF]
MISS MWS 3B17 6212 816 Rita 0G10 of 8A5 Rito 8E8
 13099149 Miss MWS 422 3115 6212 MWS 939 E10 422
 Black Diamond TT 3115

BEPD	WEPD	YEPD	MILK
+2.0	.34	+26	.22
+51	.20	+14	.18

- ◆ Sells with her 3/11/10 heifer calf, Lot 18A, by HT Rito IT8 319 7211
- ◆ Tracing to the foundation Rito 72
- ◆ Solid work and wear genetics that function on Virginia's finest fescue pastures



**Rito 72 (Rito 707 of Ideal 836 71)
 Lot 18 traces to this foundation sire.**

19 MISS HT 231A 3110 526

Calved: 02/12/2005 Cow 15114335 Tattoo: 526
 Rito Traditionalist 0D15 +Ideal 7290 of 809 3134
MWS RITO 0D15 F014 3110 Lisnageers Miss Barbara 402
 14437394 WH F014 Edella D104-2000 #Minerts Fortune 2000 [AMF-NHF]
 #WH D104 DS Edella A059 A036

MWS Rito 5204 625 815 #RR Traveler 5204 [AMF-NHF]
MISS MWS RITO 815 033 231 [AMF] Miss MWSW 3D14 625
 14340893 Miss MWS Rito 803 5220 033 +Alfaros Rito Traveler 803
 Miss MWS G45 E10 5220

BEPD	WEPD	YEPD	MILK
+2.3	.36	+38	.23
+70	.21	+26	.18

- ◆ Sells with her 2/26/10 herd sire prospect, Lot 19A, by HT Rito IT8 319 7211
- ◆ A very fertile cow that records a 346 day calving interval on 2 head.
- ◆ Dam consistently produces low-birth with that grow with a progeny BWR 2 @ 95 and WWR 2@101

21 MISS MWS RITO 2129 921 415

Calved: 01/30/2004 Cow 14962289 Tattoo: 4223
 #Emulation N Bar 5522 #Emulation 31 [DWF-RDF]
N BAR LINE 25CC 2F7 Ankony 8F78 Lass 8F275
 14340019 N Bar Nalie Z1078 #N Bar Prime Rate
 #N Bar Nalie U780

Rito 931 of 85 A63 Ideal 85 of Rito 549 6277
MISS MWS RITO 723 931 126 Rito Majesty 5A63 of 809
 14015117 Miss MWS 2RT2 5220 723 #Rito 2RT2 of 0B5 RR Traveler [AMF-NHF]
 Miss MWS G45 E10 5220

BEPD	WEPD	YEPD	MILK
-1.4	.37	+32	.24
+56	.21	+19	.22

- ◆ Sells with her 3/8/10 herd sire prospect, Lot 21A, by HT Rito 3R9 423 7130
- ◆ Another cow that does it on fescue. A blending of foundation Emulation and Rito bloodlines
- ◆ Carries a 363 day calving interval on 4 head.

20 MISS MWS RITO 2F7 1D3 4228

Calved: 02/19/2004 Cow 14962291 Tattoo: 4228
 #Emulation N Bar 5522 #Emulation 31 [DWF-RDF]
N BAR LINE 25CC 2F7 Ankony 8F78 Lass 8F275
 14340019 N Bar Nalie Z1078 #N Bar Prime Rate
 #N Bar Nalie U780

+Rito Intensifier 9R3 #+Ideal 692 of 9J9 3134 [AMF]
MISS MWS RITO 9V3 E014 1D3 Ideal 3407 of 1418 076
 14342153 WH E014 DS Edella C086 2000 #Minerts Fortune 2000 [AMF-NHF]
 WH C086 Edella 8951-8777

BEPD	WEPD	YEPD	MILK
+8	.37	+37	.23
+70	.21	+16	.22

- ◆ Sells with her 2/18/10 herd sire prospect, Lot 20A, by HT Rito 3R9 423 7130
- ◆ A solid producing female who records a progeny WWR 3@99 and YWR 2@104
- ◆ Low-birth weight expression backed by a tabulation that includes many of the breed's most highly regarded Pathfinder bloodlines.

22 MISS MWS RITO 931 021 4214

Calved: 02/07/2004 Cow 14961774 Tattoo: 4214
 Ideal 85 of Rito 549 6277 #+Rito 549 of Ideal 154 9J9 [AMC]
RITO 931 OF 85 A63 Ee 6277 of Ideal 46 1254
 13352350 Rito Majesty 5A63 of 809 #Rito Excel 809
 Rita 8J14 of 6CT7 5H20

+Dakota 820 of Ideal Ideal 7365 Super X 5189 5180
MISS MWS RITO 820D 6212 021 EE 4286 of Ideal 2240 1254
 13596479 Miss MWS 422 3115 6212 MWS 939 E10 422
 Black Diamond TT 3115

BEPD	WEPD	YEPD	MILK
+3.4	.37	+36	.25
+65	.23	+28	.22

- ◆ Sells with her 3/18/10 herd sire prospect, Lot 22A, by HT 6216 4215 8224
- ◆ A proven producer that stems from a hard working cow family.
- ◆ Posts a progeny WWR of 115 and YWR of 116 and from a dam who records 3 weaned @ 108

HT HILLTOP SPRING PAIRS

23

MISS MWS RITO 931 0D1 4227

Calved: 02/17/2004 Cow 14961781 Tattoo: 4227
 Ideal 85 of Rito 549 6277 #+Rito 549 of Ideal 154 9J9 [AMC]
RITO 931 OF 85 A63 Ee 6277 of Ideal 46 1254
 13352350 Rito Majesty 5A63 of 809 #Rito Excel 809
 Rita 8J14 of 6CT7 5H20
 MWS Rito 415 0N8 836 MWS 8704 8756 415
MISS MWS RITO 232 836 0D1 Black Diamond 6N8 0N8
 14015127 Miss MWS Rito 9T2 MM4542 232 +Rito 9T2 of 748 2100
 Maymont Blkcp Empress 4542

BEPD	WEPD	YEPD	MILK
+6.7	.36	+31	.24
		+59	.22
		+22	.22

- ◆ Sells with her 3/6/10 herd sire prospect, Lot 23A, by HT 6216 4215 8224
- ◆ Top producing cow with a progeny WWR 2@111, YWR 2@106 and a 323 calving interval on 2 head.
- ◆ Rito bred female that stacks performance and production

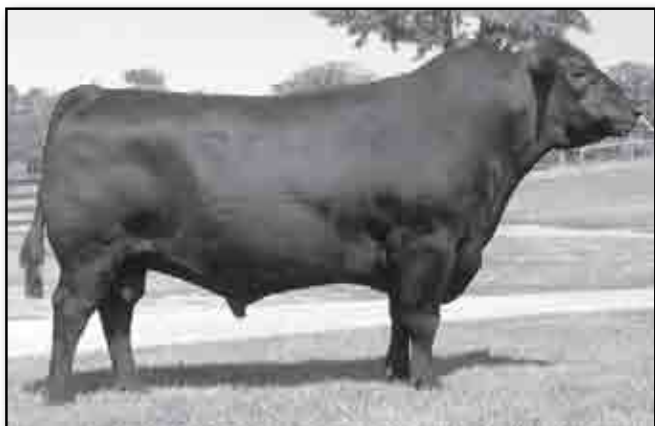


Cowboy Wilson Chitwood at Diamond S

DIAMOND S BRED HEIFERS



Ginger Hill Queen 451 - Dam of Lot 26



BT Right Time 24J - Sire of Lots 27 & 28

24

MISS MWS RITO 931 123 4219

Calved: 02/09/2004 Cow 14961776 Tattoo: 4219
 Ideal 85 of Rito 549 6277 #+Rito 549 of Ideal 154 9J9 [AMC]
RITO 931 OF 85 A63 Ee 6277 of Ideal 46 1254
 13352350 Rito Majesty 5A63 of 809 #Rito Excel 809
 Rita 8J14 of 6CT7 5H20
 +Alfaros Rito Traveler 803 #DHD Traveler 6807 [AMF-NHF]
MISS MWS RITO 7217 803 123 [AMF] +Rita 2T1 of 5H11 Rito 149
 14029596 Miss MWS 527 122 7213 MWS C024 3115 527
 Miss MWS 8704 4103 122

BEPD	WEPD	YEPD	MILK
+2.7	.36	+30	.24
		+53	.22
		+19	.20

- ◆ Sells with her 2/24/10 herd sire prospect, Lot 24A, by HT Rito IT8 319 7211
- ◆ Another top producer with a progeny WWR 6@104, YWR 4@101
- ◆ Rito X Traveler cross with top production on grass

25

MISS MWS RITO 0221 711 3212

Calved: 02/17/2003 Cow 14428899 Tattoo: 3212
 +Alfaros Rito Traveler 803 #DHD Traveler 6807 [AMF-NHF]
MWS RITO 803 625 0221 +Rita 2T1 of 5H11 Rito 149
 13591545 Miss MWSWW 3D14 625 #Westwind Rito 8503 DJH 019 [AMF-NHF]
 Miss MWS 191 0N8 3D14
 #Ideal 1418 of 8103 4286 [AMF-NHF] Ideal 8103 of Eldo 5110 5213
MISS MWS 1418 D088 711 EE 4286 of Ideal 2240 1254
 12840481 WH D088 Rita 8898 A036 WH A036 Rito 8503 2100
 Rita 8E5 of 5C16 Traveler

BEPD	WEPD	YEPD	MILK
+2.2	.27	+34	.19
		+58	.16
		+15	.23

- ◆ Sells with her 3/3/10 herd sire prospect, Lot 25A, by HT Rito 3R9 423 7130
- ◆ She stems from a top producing cow family in the Hilltop program.
- ◆ Easy fleshing production genetics

26

DSF QUEEN 22U

Calved: 09/04/2008 Cow 16422876 Tattoo: 22U
 #+OCC Emblazon 854E #DHD Traveler 6807 [AMF-NHF]
+OCC JUST RIGHT 619J Dixie Erica of CH 1019
 +13492456 OCC Juanada 709V #Cole Creek Oscar 92R
 #Juanada of Rollin Rock 0355
 Ginger Hill Treasure 2004 Ginger Hill Treasure 8018
GINGER HILL QUEEN 451 Ginger Hill Dawn 631
 15056499 #Ginger Hill Queen 1505 #BCC Bushwacker 41-93 [AMF-NHF]
 Ginger Hill Queen 9538

BEPD	WEPD	YEPD	MILK
+1.9	.35	+42	.25
		+73	.24
		+17	.17

- ◆ AI Bred 11/30/09 WRA Mirror Image T10, pasture bred 12/15/09-2/3/10 WRA Mirror Image T10
- ◆ This top performing heifer had an individual WN ratio of 106 and YW ratio 103.
- ◆ From an exceptional dam who records a progeny WWR 2@105 and traces to the highly acclaimed Pathfinder, Ginger Hill Queen 1505.

27

DSF EUROTIA 5U

Calved: 08/24/2008 Cow 16422874 Tattoo: 5U
 #+Leachman Right Time #N Bar Emulation EXT [AMF-NHF]
#+BT RIGHT TIME 24J [AMF-NHF] Leachman Erica 0025
 #+13360311 Sitz Everelda Entense 1905 #Traveler 124 GDAR
 #Sitz Everelda Entense 1791
 Big Elban of Graham 35351 Big Elban of Graham 45448
DSF 3396 GRAHAM 5101 Graham Miss Burgess B 126
 15467799 KT Irvington 2991 Forte 3396 #Papa Forte 1921
 KT Irvington 1959 LB 2991

BEPD	WEPD	YEPD	MILK
+2.1	.33	+47	.24
		+76	.24
		+19	.18

- ◆ AI Bred 11/30/09 OCC Homer 650H, pasture bred 12/15/09-2/3/10 WRA Mirror Image T10
- ◆ Top performing heifer at weaning with a 107 index.
- ◆ Her dam records 2 weaned at 102 ratio and stems from a top cow family bred in Billy King's Irvington farm program, West Point, GA.
- ◆ Maternal function and efficiency genetics on grass.



DIAMOND BRED HEIFERS

28

DSF POLLY 23U

Calved: 09/05/2008 Cow 16422855 Tattoo: 23U

#+Leachman Right Time #N Bar Emulation EXT [AMF-NHF]
 #+BT RIGHT TIME 24J [AMF-NHF] Leachman Erica 0025
 #+13360311 Sitz Everelda Entense 1905 #Traveler 124 GDAR
 #Sitz Everelda Entense 1791
 #N Bar Emulation EXT [AMF-NHF] #Emulation N Bar 5522
 +CSP POLLY P118 N Bar Primrose 2424
 +14926892 +Oak Hill Polly 8200 [AMF] #Traveler 124 GDAR
 +VDAR Polly 4027

BEPD		WEPD		YEPD		MILK	
+3.2	.34	+44	.25	+76	.25	+24	.21

- ◆ AI Bred 11/30/09 WRA Mirror Image T10, pasture bred 12/15/09-2/3/10 WRA Mirror Image T10
- ◆ She stems from Johnny Asal's long-time Donor, VDAR Polly 4027 who was a member of the flush that also produced the \$50,000 VDAR Vision 243.
- ◆ Grand dam, was the foundation "Polly" selected by Triple J Farms, VA as the \$48,000 top-selling female at the first Oak Hill production Sale.



Oak Hill Polly 8200 - Grandam of Lot 28

VDAR Polly 4027 - Great Grandam of Lot 28



29

DSF ROSE 35U

Calved: 10/01/2008 Cow 16422851 Tattoo: 35U

#+BT Right Time 24J [AMF-NHF] #+Leachman Right Time Sitz Everelda Entense 1905
 DSF 8T0 24J 5108 #Rito 707 of Ideal 533 70 [AMF-NHF]
 15467808 +Mystic Hill Blackbird 8T0 Mystic Hill Blackbird 423
 #+OCC Emblazon 854E #DHD Traveler 6807 [AMF-NHF]
 CAROUSEL ROSEMARY 374 Dixie Erica of CH 1019
 14939228 +Carousel Rose Mary #N Bar Emulation EXT [AMF-NHF]
 Skyway Hills Rose 149

BEPD		WEPD		YEPD		MILK	
+1.8	.29	+41	.18	+69	.17	+16	.11

- ◆ AI Bred 11/30/09 WRA Mirror Image T10, pasture bred 12/15/09-2/3/10 WRA Mirror Image T10
- ◆ Traces to the same cow family as Lot 49.
- ◆ An incredible pedigree blending top production genetics. Double-bred "EXT" with "Rito 149" and "Emblazon thrown in for good measure.

30

DSF MARGARET 30U

Calved: 09/19/2008 Cow 16422877 Tattoo: 30U

#BAR Ext Traveler 205 [AMF-NHF] #N Bar Emulation EXT [AMF-NHF]
 NEALA TRAVELER 404 #BAR Queen Traveler 3015
 15105633 #Mystic Hill Miss Rito 273 #AAR Really Windy 1205 [AMF-NHF]
 Mystic Hill Genesis 055
 Hyland Boss 0206 +Mistic of Volga 2018
 HYLAND MARGARET 0620 Barbara of Volga 2068
 15528674 #Hyland Margaret 0251 1 Hollywood Waltz Como 003
 Margaret of Volga 9903

BEPD		WEPD		YEPD		MILK	
+9	.32	+29	.21	+61	.19	+21	.10

- ◆ Bred 11/30/09 WRA Mirror Image T10, pasture bred 12/15/09-2/3/10 WRA Mirror Image T10
- ◆ From a really good "Boss" daughter selected in SD, her Pathfinder maternal grand dam has been one of the good ones with a progeny weaning ratio of 3@109 and a 359 day calving interval on 3 head.
- ◆ A top indexing heifer at a year at 101. Here's one that's hard to part with.

HILLTOP BRED HEIFERS

31

MISS HT MAGNITUDE 3123 9118

Calved: 01/22/2009 Cow 16583882 Tattoo: 9118

#+OCC Emblazon 854E #DHD Traveler 6807 [AMF-NHF]
 OCC MAGNITUDE 805M [AMF-NHF] Dixie Erica of CH 1019
 14456390 OCC Pollyanna 878G #N Bar Emulation EXT [AMF-NHF]
 OCC Pollyanna 934E
 #N Bar Prime Time D806 [AMF-NHF] #Gardens Prime Time [AMF-NHF]
 MISS MWS RITO N-BAR D806 117 [AMF] N Bar Miss Emulous A404
 14428893 Miss MWS Rito 625 931 117 Rito 931 of 85 A63
 Miss MWSWW 3D14 625

BEPD		WEPD		YEPD		MILK	
I+.9	.05	I+.38	.05	I+.68	.05	I+.18	.05

- ◆ Sells AI Bred 4/9/10 LCC New Standard
- ◆ Sired by the ABS Global, "Magnitude" and out of a top producing "D806" daughter who records a progeny WWR 4@101.
- ◆ Great blend of maternal genetics that function on grass in a low-input production model.



OCC Magnitude 805M - Sire of Lots 31 & 32

32

MISS HT 805 5213 9126

Calved: 01/24/2009 Cow 16583886 Tattoo: 9126

#+OCC Emblazon 854E #DHD Traveler 6807 [AMF-NHF]
 OCC MAGNITUDE 805M [AMF-NHF] Dixie Erica of CH 1019
 14456390 OCC Pollyanna 878G #N Bar Emulation EXT [AMF-NHF]
 OCC Pollyanna 934E
 MWS Rito 0D15 F014 3110 Rito Traditionalist 0D15
 MISS HT 2120 3110 5213 [AMF] WH F014 Edella D104-2000
 15114332 Miss MWS Rito 931 625 2120 [AMF] Rito 931 of 85 A63
 Miss MWSWW 3D14 625

BEPD		WEPD		YEPD		MILK	
I+.3.2	.05	I+.44	.05	I+.74	.05	I+.25	.05

- ◆ Sells AI Bred 4/9/10 Advocate
- ◆ Another "Magnitude" that stems from a top-producing cow that posts a progeny WWR 2@112.
- ◆ A top indexing heifer at weaning with a 105 ratio.

33

HT 718 7110 9141

Calved: 1/31/2009 Cow Tattoo: 9141

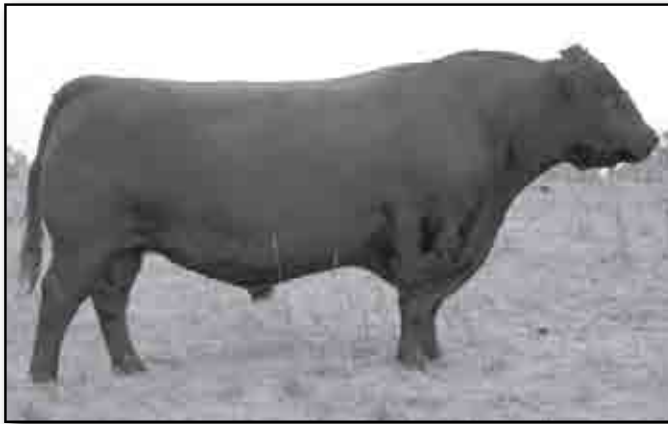
Sinclair Open Range 2Q23 [AMF-NHF] #Rito 616 of 4B20 6807 [AMF-NHF]
 HT RITO OPEN RANGE 2122 718 SCC Majesty K024 853
 15961161 Miss MWS Rito 931 7112 2122 [AMF] Rito 931 of 85 A63
 OCC Pollyanna 934E Rito Traditionalist 0D15
 MWS Rito 0D15 F014 3110 Rito Traditionalist 0D15
 MISS HT 3110 0217 7110 [AMF] WH F014 Edella D104-2000
 15959709 Miss MWS Rito 815 835 0217 MWS Rito 5204 625 815
 Miss Rito 415 5220 835

BEPD		WEPD		YEPD		MILK	
S +1.3	.35	+43	.26	+77	.24	+23	.16
D +4.0	.33	+34	.22	+65	.20	+27	.10

- ◆ Sells AI Bred 4/9/10 Sinclair Extra 4X13
- ◆ 109 yearling weight ratio



HILLTOP BRED HEIFERS



**Sinclair Extra 4x13 - Service Sire to
Lots 33, 42, 46, 47, & 48**

37 MISS HT 3542 6213 9130
 Calved: 01/27/2009 Cow 16583889 Tattoo: 9130
 #+Ideal 7451 of 8103 4465 [AMF-NHF] Ideal 8103 of Eldo 5110 5213
+IDEAL 3542 OF 7451 7417 [AMF-NHF] +Ideal 4465 of 6807 4286 [AMF-NHF]
 +14523007 +Ideal 7417 of 1418 4465 #Ideal 1418 of 8103 4286 [AMF-NHF]
 +Ideal 4465 of 6807 4286 [AMF-NHF]
 #Bon View New Design 878 [AMF-NHF] #B/R New Design 036 [AMF-NHF]
MISS HT 878 432 6213 Bon View Gammer 85
 15665068 Miss MWS Rito 2F7 273 432 N Bar Line 2SCC 2F7
 Springwood Belle 273

BEPD		WEPD		YEPD		MILK	
I+2	.05	I+39	.05	I+79	.05	I+24	.05

- ◆ Sells AI Bred 4/9/10 LCC New Standard
- ◆ Curve-bending expression in this heifer with a .2 BWEPD and 79 YWEPD
- ◆ Dam sells as Lot 17

34 MISS HT I87 311 9113
 Calved: 01/20/2009 Cow 16583880 Tattoo: 9113
 #Sitz Alliance 6595 [AMF-NHF] #Sitz Traveler 8180 [AMF-NHF]
#KMK ALLIANCE 6595 I87 [AMF-NHF] #Sitz Barabamere Jet 2698
 #13346328 #+GAR Ext 916 [AMF] #N Bar Emulation EXT [AMF-NHF]
 GAR Bando 338
 Rito 931 of 85 A63 Ideal 85 of Rito 549 6277
MISS MWS RITO 931 721 311 [AMF] Rito Majesty 5A63 of 809
 14428888 Miss MWS T100 372 721 #Transformer 100 EAR
 Miss Viking Sky Chief

BEPD		WEPD		YEPD		MILK	
I+2.7	.05	I+44	.05	I+83	.05	I+21	.05

- ◆ Sells AI Bred 4/9/10 LCC New Standard
- ◆ 102 yearling weight ratio, direct from the Hilltop replacement pen.
- ◆ Dam has been a solid producer in a very competitive group of contemporaries

38 MISS HT 3542 6351 9136
 Calved: 01/29/2009 Cow 16583891 Tattoo: 9136
 #+Ideal 7451 of 8103 4465 [AMF-NHF] Ideal 8103 of Eldo 5110 5213
+IDEAL 3542 OF 7451 7417 [AMF-NHF] +Ideal 4465 of 6807 4286 [AMF-NHF]
 +14523007 +Ideal 7417 of 1418 4465 #Ideal 1418 of 8103 4286 [AMF-NHF]
 +Ideal 4465 of 6807 4286 [AMF-NHF]
 Ideal 2292 of 1254 0388 Ee 30 1254 of Ideal 5254 960
IDEAL 6351 OF 2292 4517 Ideal 0388 of 7262 023
 12636795 +Ideal 4517 of Ext 7394 #N Bar Emulation EXT [AMF-NHF]
 Ideal 7394 Super X 5189 5275

BEPD		WEPD		YEPD		MILK	
I-2	.05	I+40	.05	I+84	.05	I+18	.05

- ◆ Sells AI Bred 4/9/10 LCC New Standard
- ◆ Some added bred-in carcass comes with this heifer as her dam posts a progeny REA ratio of 5@108
- ◆ Another curve-bender with a -.2 BWEPD and +84 YWEPD

35 MISS HT I87 535-A 9129
 Calved: 01/11/2009 Cow 16583888 Tattoo: 9129
 #Sitz Alliance 6595 [AMF-NHF] #Sitz Traveler 8180 [AMF-NHF]
#KMK ALLIANCE 6595 I87 [AMF-NHF] #Sitz Barabamere Jet 2698
 #13346328 #+GAR Ext 916 [AMF] #N Bar Emulation EXT [AMF-NHF]
 GAR Bando 338
 MWS Rito 0D15 F014 3110 Rito Traditionalist 0D15
MISS HT 2122 3110 535-A [AMF] WH F014 Edella D104-2000
 15114340 Miss MWS Rito 931 7112 2122 [AMF] Rito 931 of 85 A63
 Miss MWS 033 5217 7112

BEPD		WEPD		YEPD		MILK	
I+4.4	.05	I+51	.05	I+88	.05	I+28	.05

- ◆ Sells AI Bred 4/9/10 LCC New Standard
- ◆ Hard to ask Mike to sell this heifer as she stems from one of his most highly regarded cow families.
- ◆ Dam records a progeny WWR 121, YWR 107 and a 358 day calving interval on 3 head.

39 MISS HT 728 4223 926
 Calved: 02/06/2009 Cow 16583898 Tattoo: 926
 MWS Rito 616 2210 411 #Rito 616 of 4B20 6807 [AMF-NHF]
HT RITO 411 4N3 728-A Miss MWS Rito 815 0117 2210 [AMF]
 15955389 Miss Ht 9229 2117 4N3 [AMF] MWS Rito 931 431 2117
 Miss MWS Rito 422 232 9229
 N Bar Line 2SCC 2F7 #Emulation N Bar 5522
MISS MWS RITO 2129 921 415 [AMF] N Bar Nalie Z1078
 14962289 Miss MWS Rito 723 931 126 Rito 931 of 85 A63
 Miss MWS 2RT2 5220 723

BEPD		WEPD		YEPD		MILK	
I+5	.05	I+40	.05	I+65	.05	I+23	.05

- ◆ Sells AI Bred 4/9/10 LCC New Standard
- ◆ From a dam who does a job on fescue with a calving interval of 363 days on 4 calves.

36 MISS HT 3542 3127 9112
 Calved: 01/20/2009 Cow 16583879 Tattoo: 9112
 #+Ideal 7451 of 8103 4465 [AMF-NHF] Ideal 8103 of Eldo 5110 5213
+IDEAL 3542 OF 7451 7417 [AMF-NHF] +Ideal 4465 of 6807 4286 [AMF-NHF]
 +14523007 +Ideal 7417 of 1418 4465 #Ideal 1418 of 8103 4286 [AMF-NHF]
 +Ideal 4465 of 6807 4286 [AMF-NHF]
 #N Bar Prime Time D806 [AMF-NHF] #Gardens Prime Time [AMF-NHF]
MISS MWS RITO N-BAR D806 115 N Bar Miss Emulous A404
 14428894 Miss MWS Rito 921 815 115 MWS Rito 5204 625 815
 Miss MWS Rito G098 F014 921

BEPD		WEPD		YEPD		MILK	
I-5	.05	I+39	.05	I+78	.05	I+21	.05

- ◆ Sells AI Bred 4/9/10 LCC New Standard
- ◆ She posted a 101 YWR
- ◆ Her dam is one of the good ones with a calving interval of 357 days on 5 head

40 MISS HT 728 431-A 929
 Calved: 02/09/2009 Cow 16583900 Tattoo: 929
 MWS Rito 616 2210 411 #Rito 616 of 4B20 6807 [AMF-NHF]
HT RITO 411 4N3 728-A Miss MWS Rito 815 0117 2210 [AMF]
 15955389 Miss Ht 9229 2117 4N3 [AMF] MWS Rito 931 431 2117
 Miss MWS Rito 422 232 9229
 N Bar Line 2SCC 2F7 #Emulation N Bar 5522
MISS MWS RITO 2F7 2121 431-A [AMF] N Bar Nalie Z1078
 14962293 Miss MWS Rito 931 9036 2121 Rito 931 of 85 A63
 WH 9036 P Kathy 8245-8704

BEPD		WEPD		YEPD		MILK	
I+1.0	.05	I+40	.05	I+64	.05	I+24	.05

- ◆ Sells AI Bred 4/9/10 LCC New Standard
- ◆ Dam records a progeny WWR 2@107

HILLTOP BRED HEIFERS

41

MISS HT 728 423 9216

Calved: 02/16/2009 Cow 16583895 Tattoo: 9216

MWS Rito 616 2210 411 #Rito 616 of 4B20 6807 [AMF-NHF]
 HT RITO 411 4N3 728-A Miss MWS Rito 815 0117 2210 [AMF]
 15955389 Miss Ht 9229 2117 4N3 [AMF] MWS Rito 931 431 2117
 Miss MWS Rito 422 232 9229

+Rito Tradition 1T8 Rito 72 of Ideal 033
 MISS MWS RITO 1T8 018 423 [AMF] +Rita 6D52 of Rita 2T6 7174
 14961783 #Blackbird G 018 #+Rito 549 of Ideal 154 9J9 [AMC]
 Arrowhead Blackbird 416

BEPD		WEPD		YEPD		MILK	
I+3.3	.05	I+37	.05	I+60	.05	I+23	.05

- ◆ Sells AI Bred 4/9/10 LCC New Standard
- ◆ Linebred genetics to give you consistency in production and performance.

45

MISS HT 5D1 022 8N1

Calved: 11/17/2008 Cow 16583877 Tattoo: 8N1

+Rito Tradition 1T8 Rito 72 of Ideal 033
 HT RITO 431 1T8 5D1 +Rita 6D52 of Rita 2T6 7174
 15628656 Miss MWSBD 939 8D2 431 DDH Rito Pride 733 939
 Black Diamond 2N4 8D2

#N Bar Prime Time D806 [AMF-NHF] #Gardens Prime Time [AMF-NHF]
 MISS MWS RITO N BAR 816 022 N Bar Miss Emulous A404
 13704812 Miss MWS 3B17 6212 816 #Rito 3B17 of 0G10 Bando [AMC]
 Miss MWS 422 3115 6212

BEPD		WEPD		YEPD		MILK	
I+9	.05	I+42	.05	I+69	.05	I+18	.05

- ◆ Sells AI Bred 4/9/10 N Bar Prime Time D806
- ◆ Here's one to own. Dam records progeny ratios of 5@97 BW, 5@107 WW, 4 @ 102 YW

42

MISS HT 6216 231 927

Calved: 02/06/2009 Cow 16583899 Tattoo: 927

#Sitz Alliance 6595 [AMF-NHF] #Sitz Traveler 8180 [AMF-NHF]
 HT 383 6595 6216 #Sitz Barabamere Jet 2698
 16299866 +DCC Ideal 383 of Ext 7220 IDEAL7220 Landmark 5215 4184

MWS Rito 5204 625 815 #RR Traveler 5204 [AMF-NHF]
 MISS MWS RITO 815 033 231 [AMF] Miss MWSWW 3D14 625
 14340893 Miss MWS Rito 803 5220 033 +Alfaros Rito Traveler 803
 Miss MWS G45 E10 5220

BEPD		WEPD		YEPD		MILK	
I+3.1	.05	I+40	.05	I+76	.05	I+24	.05

- ◆ Sells AI Bred 4/9/10 Sinclair Extra 4X13
- ◆ Dam records a WWR of 2@101. Growth & pounds bred into this heifer.

46

MISS HT 5D1 111 8D5

Calved: 12/25/2008 Cow 16583875 Tattoo: 8D5

+Rito Tradition 1T8 Rito 72 of Ideal 033
 HT RITO 431 1T8 5D1 +Rita 6D52 of Rita 2T6 7174
 15628656 Miss MWSBD 939 8D2 431 DDH Rito Pride 733 939
 Black Diamond 2N4 8D2

MWS Rito 415 0N8 836 MWS 8704 8756 415
 MISS MWS RITO E014 836 111 Black Diamond 6N8 0N8
 14015112 WH E014 DS Edella C086 2000 #Minerts Fortune 2000 [AMF-NHF]
 WH C086 Edella 8951-8777

BEPD		WEPD		YEPD		MILK	
I+3.2	.05	I+33	.05	I+56	.05	I+9	.05

- ◆ Sells AI Bred 4/9/10 Sinclair Extra 4X13
- ◆ Balanced EPD expression from a lineage time-tested and proven

43

MISS HT 5D1 104 9140

Calved: 1/20/2009 Cow Tattoo: 9140

+Rito Tradition 1T8 Rito 72 of Ideal 033
 HT RITO 431 1T8 5D1 +Rita 6D52 of Rita 2T6 7174
 15628656 Miss MWSBD 939 8D2 431 DDH Rito Pride 733 939
 Black Diamond 2N4 8D2

+Rito Intensifier 9R3 #+Ideal 692 of 9J9 3134 [AMF]
 MISS MWS RITO 9V3 7216 1D4 Ideal 3407 of 1418 076
 14342152 Miss MWS 527 534 7216 MWS C024 3115 527
 Miss MWS G45 232 534

	BEPD		WEPD		YEPD		MILK	
S	+2.2	.31	+39	.20	+62	.11	+16	.13
D	+3.7	.21	+36	.16	+60	.14	+19	.21

- ◆ Sells AI Bred 4/9/10 N Bar Prime Time D806
- ◆ From a top producing dam that posts a progeny WWR 2@105

47

MISS HT 5D1 3112 8D7

Calved: 12/16/2008 Cow 16583876 Tattoo: 8D7

+Rito Tradition 1T8 Rito 72 of Ideal 033
 HT RITO 431 1T8 5D1 +Rita 6D52 of Rita 2T6 7174
 15628656 Miss MWSBD 939 8D2 431 DDH Rito Pride 733 939
 Black Diamond 2N4 8D2

Rito 931 of 85 A63 Ideal 85 of Rito 549 6277
 MISS MWS RITO 931 7216 3112 Rito Majesty 5A63 of 809
 14428889 Miss MWS 527 534 7216 MWS C024 3115 527
 Miss MWS G45 232 534

BEPD		WEPD		YEPD		MILK	
I+3.2	.05	I+34	.05	I+58	.05	I+14	.05

- ◆ Sells AI Bred 4/9/10 Sinclair Extra 4X13
- ◆ She stems back to the foundation Rito 72

44

MISS HT 5D1 1110 8N5

Calved: 11/27/2008 Cow 16583878 Tattoo: 8N5

+Rito Tradition 1T8 Rito 72 of Ideal 033
 HT RITO 431 1T8 5D1 +Rita 6D52 of Rita 2T6 7174
 15628656 Miss MWSBD 939 8D2 431 DDH Rito Pride 733 939
 Black Diamond 2N4 8D2

+Alfaros Rito Traveler 803 #DHD Traveler 6807 [AMF-NHF]
 MISS MWS RITO 511 803 1110 +Rita 2T1 of 5H11 Rito 149
 14015114 Miss MWS G45 8756 511 JEH Rito G45
 WH 8756 Edella 7267-2147

BEPD		WEPD		YEPD		MILK	
I+2.9	.05	I+30	.05	I+55	.05	I+11	.05

- ◆ Sells AI Bred 4/9/10 LCC New Standard
- ◆ Balanced EPD expression with a foundation pedigree

48

MISS HT 5D1 021 8D1

Calved: 12/02/2008 Cow 16583872 Tattoo: 8D1

+Rito Tradition 1T8 Rito 72 of Ideal 033
 HT RITO 431 1T8 5D1 +Rita 6D52 of Rita 2T6 7174
 15628656 Miss MWSBD 939 8D2 431 DDH Rito Pride 733 939
 Black Diamond 2N4 8D2

+Dakota 820 of Ideal Ideal 7365 Super X 5189 5180
 MISS MWS RITO 820D 6212 021 EE 4286 of Ideal 2240 1254
 13596479 Miss MWS 422 3115 6212 MWS 939 E10 422
 Black Diamond TT 3115

BEPD		WEPD		YEPD		MILK	
I+2.2	.05	I+41	.05	I+70	.05	I+18	.05

- ◆ Sells AI Bred 4/9/10 Sinclair Extra 4X13
- ◆ From a dam that posts an impressive production record of 3@108 WN, 3@109 YW
- ◆ Individual YW index 101



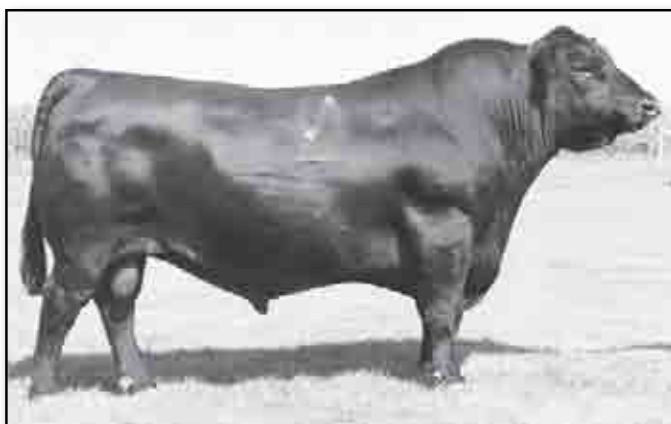
DIAMOND S OPEN HEIFERS



WRA Mirror Image T10 - Sire of Lot 49



Ginger Hill Blackbird 9549 - Dam of Lot 50



N Bar Emulation EXT - Grandsire of Lot 51

49 DSF ROSE 4W
 Calved: 01/31/2009 Cow 16574780 Tattoo: 4W
 #+HA Image Maker 0415 [AMF-NHF] #Hero 6267 of RR 2418
WRA MIRROR IMAGE T10 HA Rito Blackcap 9038
 15861097 WRA Eileen Bar 115P #CAR Duke 104
 WRA Eileen Bar 115M
 #N Bar Emulation EXT [AMF-NHF] #Emulation N Bar 5522
+CAROUSEL ROSE MARY N Bar Primrose 2424
 +13018872 Skyway Hills Rose 149 Skyway Hills Big Time
 Maymont Rose 717

BEPD	WEPD	YEPD	MILK
+1.4	.28	+48	.18
		+80	.11
		+21	.11

- ◆ Sells Open
- ◆ Stems from the same cow family as Lot 29 cow.
- ◆ One of the first "Mirror Image" daughters to sell at auction.
- ◆ Individual weaning index 104, dam records a progeny WR 4@101

50 DSF BLACKBIRD 10W
 Calved: 04/30/2009 Cow 16544258 Tattoo: 10W
 #+OCC Emblazon 854E #DHD Traveler 6807 [AMF-NHF]
DSF 1148 EMBLAZON 712 Dixie Erica of CH 1019
 15868055 +Blue Ridge Miss Skymere I148 #Sitz Traveler 9929
 +Whitestone Miss Skymere 3032
 #+Ginger Hill 6807 Traveler 23 [RTF] #DHD Traveler 6807 [AMF-NHF]
GINGER HILL BLACKBIRD 9549 Ginger Hill Helen 45
 13570679 GDAR Blackbird Lady 8136 #Mc Cumber Stretch 604
 #GDAR Lady Blackbird 6213

BEPD	WEPD	YEPD	MILK
+2.0	.26	+45	.17
		+72	.13
		+20	.13

- ◆ Sells Open
- ◆ From one of the top-producing cow families at Diamond S. Dam posts a progeny WWR 8@102.
- ◆ This heifer posted an individual weaning index 105

51 DSF ELBA 1W
 Calved: 01/15/2009 Cow 16544260 Tattoo: 1W
 #+BT Right Time 24J [AMF-NHF] #+Leachman Right Time
DSF 870 24J 5108 Sitz Everelda Entense 1905
 15467808 +Mystic Hill Blackbird 8T0 #Rito 707 of Ideal 533 70 [AMF-NHF]
 Mystic Hill Blackbird 423
 #N Bar Emulation EXT [AMF-NHF] #Emulation N Bar 5522
KCC ELBA 621 [AMF] N Bar Primrose 2424
 15400241 Mystic Hill Elba 340 [AMF] Mystic Hill Traveler 0105
 Mystic Hill Elba 861

BEPD	WEPD	YEPD	MILK
I+4.0	.23	I+41	.19
		I+68	.05
		I+23	.11

- ◆ Sells Open
- ◆ From a 2-year old that promises to be a great producer as she weaned this heifer at a 109 ratio.
- ◆ Double-bred "EXT" and note the Rito 149 close in the pedigree.

HT HILLTOP OPEN HEIFERS

52 MISS HT 7218 5212 934
 Calved: 03/09/2009 Cow 16583902 Tattoo: 934
 HT NPV 271 3215 522 +Sinclair Net Present Value [AMF-NHF]
HT RITO 522 4214 7218 Miss MWS Rito 9V3 9229 271 [AMF]
 15955386 Miss MWS Rito 931 021 4214 [AMF] Rito 931 of 85 A63
 Miss MWS Rito 820D 6212 021
 Sinclair Horizon 3S12 N Bar Shadow X4124
MISS HT 317 3S12 5212 [AMF] Brooks Lady Advantage 417
 15114331 Miss MWS Rito 931 7110 317 [AMF] Rito 931 of 85 A63
 Miss MWS 033 E115 7110

BEPD	WEPD	YEPD	MILK
I+3.9	.05	I+44	.05
		I+72	.05
		I+29	.05

- ◆ Sells Open
- ◆ Sinclair breeding top and bottom, this heifer will mature into a valued brood cow blending "Shadow X4124" with "Net Present Value".

53 MISS HT 718 383 941
 Calved: 4/4/2009 Cow 16544260 Tattoo: 941
 Sinclair Open Range 2Q23 [AMF-NHF] #Rito 616 of 4B20 6807 [AMF-NHF]
HT RITO OPEN RANGE 2122 718 SCC Majesty K024 853
 15961161 Miss MWS Rito 931 7112 2122 [AMF] Rito 931 of 85 A63
 Miss MWS 033 5217 7112
 #N Bar Emulation EXT [AMF-NHF] #Emulation N Bar 5522
+DCC IDEAL 383 OF EXT 7220 N Bar Primrose 2424
 +12998124 IDEAL7220 Landmark 5215 4184 +Landmark 5215 of Ideal 9100
 Super X 4184 Ideal 214 X01

BEPD	WEPD	YEPD	MILK
S +1.3	.35	+43	.26
D +5.1	.43	+42	.34
		+77	.24
		+76	.32
		+23	.16
		+24	.37

- ◆ Sells Open
- ◆ "Open Range" x "5522" x "Landmark" blend that expresses generations of top production and performance



DIAMOND LONG-YEARLING HERD SIRE PROSPECTS



BT Right Time 24J - Sire of Lots 54 & 55

DSF TRAVELER 31U

Calved: 09/22/2008		Bull 16453153		Tattoo: 31U	
#BAR Ext Traveler 205 [AMF-NHF]		#N Bar Emulation EXT [AMF-NHF]		#BAR Queen Traveler 3015	
NEALA TRAVELER 404		#Mystic Hill Miss Rito 273		#AAR Really Windy 1205 [AMF-NHF]	
15105633				Mystic Hill Genesis 055	
Big Don of Volga 9924				Manning of Wye	
LADY IDA 100 OF VOLGA 0665		Lady Ida 100 of Volga 2056		#Barbara of Volga 9421	
15496120				Blackcap of Volga 9541	
				Lady Ida 100 of Volga 9757	
BEPD		WEPD		YEPD	
-.1		.33		+26	
		.21		+52	
				.19	
				+19	
				.10	

- ◆ Heifer Bull
- ◆ Individual performance; BW 68, WWR96, YR 100

DSF RIGHT TIME 15U

Calved: 09/01/2008		Bull 16422858		Tattoo: 15U	
#Leachman Right Time		#N Bar Emulation EXT [AMF-NHF]		#GDAR Traveler 71 [AMF-NHF]	
#BT RIGHT TIME 24J [AMF-NHF]		Leachman Erica 0025		ANNFIELD BONNY LASS 18	
#+13360311		#Traveler 124 GDAR		15443749	
Sitz Everelda Entense 1905		#Sitz Everelda Entense 1791		HBC Rita 3A3 of 8FB2 5205	
		#Traveler 1148 GDAR			
		GDAR Miss Blackcap 567			
		#BAR Ext Traveler 205 [AMF-NHF]			
		+Rita 8FB2 of 3X24 Fullback [AMF]			
BEPD		WEPD		YEPD	
+2.9		.35		+40	
		.25		+70	
				.25	
				+26	
				.20	

- ◆ Sired by the Accelerated Sire, "24J".
- ◆ Dam is a top-producing "Traveler 71" daughter that records progeny ratios of 2@107 WN, 2@104 YW
- ◆ BW 86, WR 108, YR 104



HA Jubilation 6344 - Sire of Lots 58, 59 & 60

DSF RIGHT TIME 13U

Calved: 08/30/2008		Bull 16422872		Tattoo: 13U	
#Leachman Right Time		#N Bar Emulation EXT [AMF-NHF]		#GDAR Rainmaker 340	
#BT RIGHT TIME 24J [AMF-NHF]		Leachman Erica 0025		Sitz Pride 80	
#+13360311		#Traveler 124 GDAR		#GDAR Rainmaker 340	
Sitz Everelda Entense 1905		#Sitz Everelda Entense 1791		HA Traveler Maid 9023	
				#Summitcrest High Prime 0H29 [AMF-NHF]	
Big Don of Volga 9924		Manning of Wye		+Hills High Prime 102 490	
MARGARET OF VOLGA 0518		#Barbara of Volga 9421		HILLS ULTRA PRIDE 310-676	
15178654		Ext of Volga 9524		15341859	
#Margaret of Volga 9736		Margaret of Volga 9517		Hills Ultra Pride 310	
BEPD		WEPD		YEPD	
+2.7		.35		+35	
		.26		+57	
				.25	
				+15	
				.19	

- ◆ Sired by Accelerated Sire, "24J".
- ◆ Dam is a fertile top-producing "Big Don" daughter at posts a progeny WWR 2@104, YWR 1@ 105 with a 350 day calving interval.
- ◆ Individual performance; BW 82, WR 103, YR 105

DSF JUBILATION 24U

Calved: 09/07/2008		Bull 16422873		Tattoo: 24U	
Sitz Rainmaker 8812		#GDAR Rainmaker 340		Sitz Pride 80	
HA JUBILATION 6344		HA Traveler Maid 114		#GDAR Rainmaker 340	
12707304		HART Maid 114		HA Traveler Maid 9023	
				#Summitcrest High Prime 0H29 [AMF-NHF]	
				+Hills High Prime 102 490	
				+Hills Pride 106	
				Libido of Volga 9923	
				Hills Ultra Pride 901	
BEPD		WEPD		YEPD	
+3.0		.32		+36	
		.22		+68	
				.21	
				+20	
				.15	

- ◆ Another pounds heavy bull from a productive 2-year old
- ◆ Sired by the linebred "Rainmaker 340" Mystic Hill herd sire, "Jubilation"
- ◆ Individual performance; BW 83, WR 112, YR 108

DSF ALLIANCE

Calved: 11/13/2008		Bull 16422859		Tattoo: 47U	
#Sitz Alliance 6595 [AMF-NHF]		#Sitz Traveler 8180 [AMF-NHF]		#GDAR Rainmaker 340	
GAAF 6D3 131		#Sitz Barbaramere Jet 2698		Sitz Pride 80	
13901292		#Ideal 1418 of 8103 4286 [AMF-NHF]		#GDAR Rainmaker 340	
GAAF 6N1 1418 6D3		MS Gaaf 5838 Pine Drive 6N1		HA Traveler Maid 9023	
		#DHD Traveler 6807 [AMF-NHF]		#Summitcrest High Prime 0H29 [AMF-NHF]	
		Sitz Everelda Entense 1137		+Hills High Prime 102 490	
		#Century Touchstone 131		+Hills Pride 106	
		+Mengs Miss Skymere 27S		Libido of Volga 9923	
				Hills Ultra Pride 901	
BEPD		WEPD		YEPD	
+5.0		.32		+45	
		.21		+76	
				.19	
				+24	
				.12	

- ◆ Pounds heavy bull in the offering from a top-producing cow
- ◆ Dam boasts a progeny WWR 3@111, YWR 3@103
- ◆ Individual performance; BW 84, WR 112, YR 107



Mengs Miss Skymere 27S - Lot 56 traces to this longtime Whitestone donor.



DIAMOND S LONG-YEARLING HERD SIRE PROSPECTS

59

DSF JUBILATION 20U

Calved: 09/04/2008 Bull 16422871 Tattoo: 20U
 Sitz Rainmaker 8812 #GDAR Rainmaker 340
HA JUBILATION 6344 Sitz Pride 80
 12707304 HART Maid 114 #GDAR Rainmaker 340
 HA Traveler Maid 9023
 #+OCC Emblazon 854E #DHD Traveler 6807 [AMF-NHF]
DSF M641 EMBLAZON 632 Dixie Erica of CH 1019
 15467812 MBF Mis Brooke 9M9 759 M641 #+Rito 9M9 of 2036 Scotch Cap [AMF-NHF]
 HHF Lady Brooke 759

BEPD	WEPD	YEPD	MILK
+4	.33	+37	.24
+63	.23	+18	.17

- ◆ Heifer Bull
- ◆ A pounds heavy bull that will provide a profitable pounds heavy calf crop without the calving problems
- ◆ Individual performance; BW 68, WR 107, YR 102



Carousel Calamity - Great Grandam of Lot 61

60

DSF JUBILATION 27U

Calved: 08/21/2008 Bull 16454293 Tattoo: 27U
 Sitz Rainmaker 8812 #GDAR Rainmaker 340
HA JUBILATION 6344 Sitz Pride 80
 12707304 HART Maid 114 #GDAR Rainmaker 340
 HA Traveler Maid 9023
 Big Don of Volga 9924
MARGARET OF VOLGA 0635 #Barbara of Volga 9421
 15496115 Margaret of Volga 9940 Ext of Volga 9524
 Margaret of Volga 9517

BEPD	WEPD	YEPD	MILK
-4	.35	+25	.25
+40	.24	+17	.16

- ◆ Heifer Bull
- ◆ Generations of low-birth weight genetics giving you peace of mind calving heifers.
- ◆ Individual performance; BW 65, WR 101, YR 99

61

DSF RIGHT TIME 32U

Calved: 09/23/2008 Bull 16422878 Tattoo: 32U
 #+BT Right Time 24J [AMF-NHF] #+Leachman Right Time
DSF 8T0 24J 5108 Sitz Everelda Entense 1905
 15467808 +Mystic Hill Blackbird 8T0 #Rito 707 of Ideal 533 70 [AMF-NHF]
 Mystic Hill Blackbird 423
 Carousel ND 878 301 #Bon View New Design 878 [AMF-NHF]
DSF 377 CAROUSEL 878 5103 Carousel Clinique 2094
 15467802 Carousel Calm 377 +Carousel Forever
 Carousel Calamity

BEPD	WEPD	YEPD	MILK
+2.1	.28	+39	.16
+65	.15	+22	.08

- ◆ Low-birth weight genetics with plenty of pre and post weaning growth for profitable calf crops.
- ◆ Dam records progeny WWVR 2@107, YWR 1@102
- ◆ Individual performance; BW 80, WR 111, YR 102

DIAMOND S BRAUNVIEH GENETICS

62A

HEIFER PREGNANCY

Due: 9/1/2010
 SAMBO (NC) JORDI 8240-94 SW2455-785 BIBEREGG
MR GOLDEN LINK 6193ET LOTTI 20044-97 KUSSNACHT
 OB13393 FORELLE 9708-5 GOLD 7175-23 OBERAMT
 FINETTE G5
 RCB MR SLATE ET GRANAT (NC) MAX 14238-21
MHF REMINGTON R576 (NC) ET MISS POLLED AMON D430
 PB56766 MISS LIFELINE K0020 ET RCB BLACK UNO ET
 BNL BONINA PHENOMENON

	BEPD	WEPD	YEPD	MILK
S	0.7	0.88	13	0.89
D	0.1	0.50	1	0.50
			16	0.85
			12	0.38
			8	0.84
			5	0.36

- ◆ Guaranteed Heifer Pregnancy, due 9/1/2010
- ◆ Donor Dam, is the \$15,000 top-selling bred heifer in the 2007 National Braunvieh Sale and full sister to 2006 National Champion Female MHF Brandy.
- ◆ The Sire, "Spittin Image" represents foundation fullblood genetics. He has been arguably one of the most popular sires in the breed as a son of the imported Donor, Forelle 9708-5.
- ◆ A blend of the breeds most popular and top income producing genetics top and bottom.
- ◆ The resulting calf will be double-bred with superior kind expressing explosive rib shape and production.
- ◆ Buyer takes possession of a 3-year old commercial Angus cow, carrying the pregnancy.

62B

5 GRADE 1 EMBRYOS

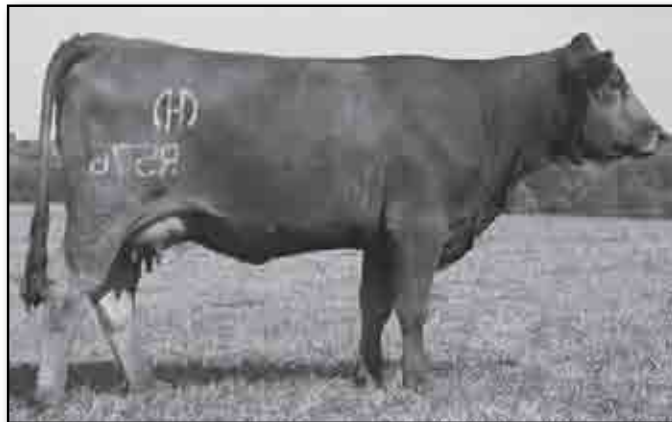
SAMBO (NC) JORDI 8240-94 SW2455-785 BIBEREGG
MR GOLDEN LINK 6193ET LOTTI 20044-97 KUSSNACHT
 OB13393 FORELLE 9708-5 GOLD 7175-23 OBERAMT
 FINETTE G5
 RCB MR SLATE ET GRANAT (NC) MAX 14238-21
MHF REMINGTON R576 (NC) ET MISS POLLED AMON D430
 PB56766 MISS LIFELINE K0020 ET RCB BLACK UNO ET
 BNL BONINA PHENOMENON

	BEPD	WEPD	YEPD	MILK
S	0.7	0.88	13	0.89
D	0.1	0.50	1	0.50
			16	0.85
			12	0.38
			8	0.84
			5	0.36

- ◆ Selling 5 Grade 1 Embryos
- ◆ Embryos are full siblings to Lot 62A Pregnancy



Spittin Image - Sire of Lots 62A & 62B



MHF Remington R576 ET - \$15,000 donor dam of Lots 62A & 62B

S

DIAMOND BRAUNVIEH BRED HEIFERS

63

DSFB U22 R540

Calved: 2/24/2008 Cow PB64553 Tattoo: DSFB U22 Horned Purebred

PFI FOCUS P411

MR GOLDEN LINK 1538

MHF SYNERGY S627

MISS PREMIUM PLUS PFI P434

MISS MATTIE OF PFI K026

PB57690

GLB POLLED PLUS 5003 (NC) ET

PFI POLLED BOBBIE F614

MHF MIMAGE M299

MR GOLDEN LINK 6193ET

MHF R540 [3/4]

MHF L105 [1/2]

MISS LIFELINE K0020 ET

BC54776

WTR GARRET 14F ET

MYSTIC HILL JAUNTY 512

BEPD	WEPD	YEPO	MILK
-1.0	0.35	4	0.23
10	0.10	4	0.10

♦ AI Bred 11/30/09 – WRA Mirror Image T10 (Angus), pasture bred 12/15/09-2/3/10 WRA Mirror Image T10

♦ Her dam is an Angus black Braunvieh and her sire is the many time Champion "Synergy"

♦ Low-birth weight with positive pre and post weaning growth.

♦ Mating to "Mirror Image" offers trouble-free calving and affords you a Braunvieh influenced calf to build with.



MHF R540 - Dam of Lot 63

64

DSFB MADISON U95 ET

Calved: 9/13/2008 Cow PB70603 Tattoo: DSFB U95 Horned Purebred

PFI FOCUS P411

MR GOLDEN LINK 1538

MHF SYNERGY S627

MISS PREMIUM PLUS PFI P434

MISS MATTIE OF PFI K026

PB57690

GLB POLLED PLUS 5003 (NC) ET

PFI POLLED BOBBIE F614

MR GOLDEN LINK 0033

BNL PURE CHROME 6901F

MHF MADISON R553

MS GLB 1571

MISS GOLDEN LINK 6060 ET

PB54790

MR GOLDENLINK"RISSON"8917 ET

MISS GOLDEN LINK 8633 [3/4]

BEPD	WEPD	YEPO	MILK
1.2	0.36	7	0.33
6	0.12	-1	0.13

♦ AI Bred 11/30/09 - WRA Mirror Image T10 (Angus), pasture bred 12/15/09-2/3/10 WRA Mirror Image T10

♦ Her dam, Madison R533", is the \$10,250 maternal sister to the \$13,500 MHF New Era N315

♦ Her sire, "Synergy", was a many time Champion and is a product of the "Premium Plus" gene pool in the PFI program.

♦ She blends an amazing genetic tabulation that includes "Pure Chrome", "Risson 8917", "PFI Focus" and is double-bred to the legendary "Polled Plus".

♦ Flush sister to this heifer was selected by Chris King, Newton, AL as the top open heifer in the 2009 Southeast Braunvieh Connection sale, at \$3,500.



MHF Madison R553 - Dam of Lot 64

DIAMOND BRAUNVIEH SPRING PAIR

65

DSFB BROWN SUGAR U21

Calved: 2/21/2008 Cow PC64552 Tattoo: DSFB U21 Horned

GINGER HILL 6807 TRAVELER 23

DHD TRAVELER 6807

GINGER HILL 23 TRAVELER 306

AN14967646 GINGER HILL BLACKCAP 8539

GINGER HILL HELEN 45

GINGER HILL ARISTOCRAT 657

GINGER HILL BLACKCAP 253

CAR DUKE 104

CAR TRACKER 904

WRB BROWN SUGAR 20S [1/2]

BC58969 WRB BROWN SUGAR 24P

C A R MISS RAINDANCER 421

MHF P FOUNDATION M205 ET

WORKMATRON J24

BEPD	WEPD	YEPO	MILK
-1.9	0.25	14	0.17
47	0.08	8	0.08

♦ Sells with her 1/29/10 heifer calf, Lot 65A, by WRB Mirror Image T10

♦ This 1/4 blood Braunvieh cow provides curve-bending EPD expression with loads of growth in a low-birth weight package.

♦ This pair provides some of the best in sustainable Angus genetics with low-birth Braunvieh genetics to utilize in a purebred breed up program – or take advantage of the heterosis and utilize in your commercial herd.



Diamond S Herdsman Matt Manbeck

DIAMOND BRAUNVIEH BRED COW

66

WRB BROWN SUGAR 24R

Calved: 3/3/2005 Cow PB56505 Tattoo: WRB 24R Polled Purebred

RCB MR SLATE ET

GRANAT (NC) MAX 14238-21

MHF P FOUNDATION M205 ET

PB42726 MISS LIFELINE K0020 ET

MISS POLLED AMON D430

RCB BLACK UNO ET

BNL BONINA PHENOMENON

WORKMAN G01 ET

STARLINE LUTZ 26N B4373

WORKMATRON J24

PB28646 WORKMATRON G66-D [3/4]

WORKMATRON F187 D159 ET

BRG DISTINCTIVE D501 ET

WORKMATRON 10-W24 [1/2]

BEPD	WEPD	YEPO	MILK
-4.8	0.43	-12	0.45
-11	0.32	4	0.27

♦ AI Bred 12/7/09 to MHF Image M299, pasture bred 12/22/09-2/3/10 DSFB New Era T115 ET

♦ Polled purebred Braunvieh cow produced in the White Ridge Braunvieh program.

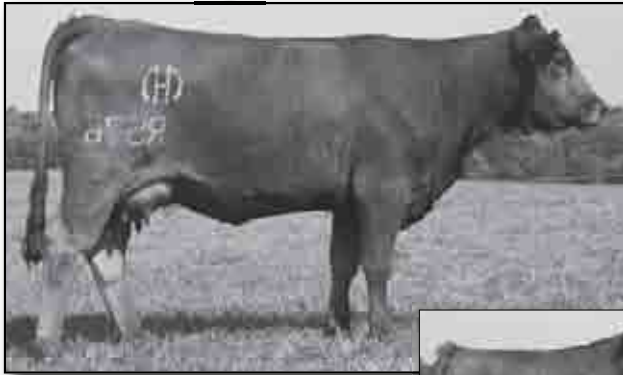
♦ Sired by "Foundation", who is a flush brother to the \$15,000 MHF Remington Donor at Diamond S, as well as MHF Brandy who was the 2006 National Champion Female and \$12,500 top-selling female in the 2008 Southeast Braunvieh Connection Sale.



MHF Synergy S627 - Sire of Lots 63, 64, 67A and 67B



DIAMOND BRAUNVIEH HERD SIRE PROSPECTS - SELLING CHOICE



**MHF Remington R576 -
Dam of Lot 67A**

**Miss Lifeline K0020 -
Grandam of Lot 67A**



MHF Madison R553 - Dam of Lot 67B

67A

DSFB SYNERGY U93 ET

Calved: 9/7/2008 Bull PB70602 Tattoo: DSFB U93 Horned Purebred

PFI FOCUS P411 MR GOLDEN LINK 1538
 MHF SYNERGY S627 MISS MATTIE OF PFI K026
 PB57690 MISS PREMIUM PLUS PFI P434 GLB POLLED PLUS 5003 (NC) ET
 PFI POLLED BOBBIE F614

RCB MR SLATE ET
 MHF REMINGTON R576 (NC) ET
 PB57666 MISS LIFELINE K0020 ET

GRANAT (NC) MAX 14238-21
 MISS POLLED AMON D430
 RCB BLACK UNO ET
 BNL BONINA PHENOMENON

BEFD	WEFD	YEFD	MILK
-2.6	0.36	-6	0.32
-5	0.13	3	0.14

- ◆ His Donor Dam, is the \$15,000 top-selling bred heifer in the 2007 National Braunvieh Sale
- ◆ Maternal Grand Dam is the legendary "Miss Lifeline K0020" who has accumulated over \$135,000 in progeny sales.
- ◆ BW 78

67B

DSFB SYNERGY U101 ET

Calved: 10/4/2008 Bull PB70604 Tattoo: DSFB U101 Polled Purebred

PFI FOCUS P411 MR GOLDEN LINK 1538
 MHF SYNERGY S627 MISS MATTIE OF PFI K026
 PB57690 MISS PREMIUM PLUS PFI P434 GLB POLLED PLUS 5003 (NC) ET
 PFI POLLED BOBBIE F614

MR GOLDEN LINK 0033 BNL PURE CHROME 6901F
 MHF MADISON R553 MISS GOLDEN LINK 6060 ET
 PB54790 MS GLB 1571 MR GOLDENLINK"RISSON"8917 ET
 MISS GOLDEN LINK 8633 [3/4]

BEFD	WEFD	YEFD	MILK
-0.7	0.36	6	0.33
7	0.12	-1	0.13

- ◆ His dam, Madison R533", is the \$10,250 maternal sister to the \$13,500 MHF New Era N315
- ◆ Her sire, "Synergy", was a many time Champion and is a product of the "Premium Plus" gene pool in the PFI program.
- ◆ He blends an amazing genetic tabulation that includes "Pure Chrome", "Risson 8917", "PFI Focus" and is double-bred to the legendary "Polled Plus".
- ◆ Flush sister to this bull was selected by Chris King, Newton, AL as the top open heifer in the 2009 Southeast Braunvieh Connection sale, at \$3,500.
- ◆ BW 84

DIAMOND COMMERCIAL VQA ANGUS BRED HEIFERS

Lot	Tattoo	Sire	Dam	DOB
68A	879	Sinclair Net Present Value	Com Angus	8/28/08
68B	881	Sinclair Net Present Value	Com Angus	9/4/08
68C	884	Sinclair Net Present Value	Com Angus	9/6/08
69A	882	OCC Just Right 619J	Com Angus	9/4/08
69B	887	DSF 8T0 24J 5108	Com Angus	10/5/08
69C	889	DSF 8T0 24J 5108	Com Angus	10/27/08

- ◆ AI Bred 11/30/09 WRA Mirror Image T10, pasture bred 12/15/09-3/1/10 NEALA Traveler 404
- ◆ VQA - Virginia Quality Assurance Certified
- ◆ Angus Sired
- ◆ Preg-Check Information On Sale Day

DIAMOND VQA BRAUNVIEH X ANGUS BRED HEIFERS

Lot	Tattoo	Sire	Dam	DOB
70A	895U	MHF Synergy S627	Com Angus	11/1/08
70B	897U	MHF Synergy S627	Com Angus	11/3/08
70C	899U	MHF Synergy S627	Com Angus	11/6/08
70D	8101U	MHF Synergy S627	Com Angus	11/9/08
71A	8103U	MHF P Foundation M250 ET	Com Angus	11/13/08
71B	8104U	MHF P Foundation M250 ET	Com Angus	11/13/08
71C	8106U	MHF P Foundation M250 ET	Com Angus	11/14/08
71D	8107U	MHF P Foundation M250 ET	Com Angus	11/14/08
72A	8109U	MHF P Foundation M250 ET	Com Angus	11/16/08
72B	8111U	MHF P Foundation M250 ET	Com Angus	11/18/08
72C	8112U	MHF P Foundation M250 ET	Com Angus	11/19/08
73A	8113U	MHF P Foundation M250 ET	Com Angus	11/21/08
73B	8114U	MHF P Foundation M250 ET	Com Angus	11/21/08
73C	8115U	MHF P Foundation M250 ET	Com Angus	11/23/08
74A	8116U	MHF P Foundation M250 ET	Com Angus	11/24/08
74B	8118U	MHF P Foundation M250 ET	Com Angus	11/25/08
74C	8120U	MHF P Foundation M250 ET	Com Angus	11/26/08
74D	8121U	MHF P Foundation M250 ET	Com Angus	11/26/08
74E	8122U	MHF P Foundation M250 ET	Com Angus	11/27/08
75A	8125U	MHF P Foundation M250 ET	Com Angus	12/16/08
75B	8127U	MHF P Foundation M250 ET	Com Angus	12/27/08

- ◆ AI Bred 11/30/09 WRA Mirror Image T10, pasture bred 12/15/09-3/1/10 NEALA Traveler 404
- ◆ VQA - Virginia Quality Assurance Certified
- ◆ Braunvieh Sired - Beef Builder Heifers
- ◆ Preg-Check Information On Sale Day



REFERENCE SIRES



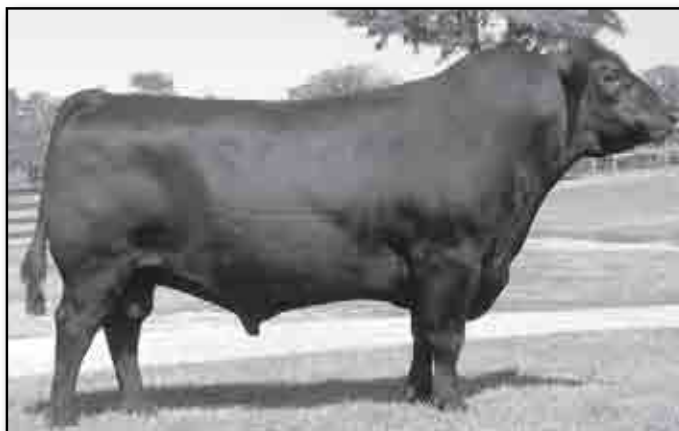
WRA Mirror Image T10

A **WRA MIRROR IMAGE T10**
 Calved: 02/08/2007 Bull 15861097 Tattoo: T10
 #Hero 6267 of RR 2418 #RR Hero 6267
#+HA IMAGE MAKER 0415 [AMF-NHF] RR Everelda Entense 0413
 #+13739532 HA Rito Blackcap 9038 H 96 Rito 2100 7371
 H 96 Blackcap 3835
 #CAR Duke 104 #Car Tracker 904
WRA EILEEN BAR 115P #CAR Miss Raindancer 421
 14842003 WRA Eileen Bar 115M WRA M0J0 K5
 WRA Eileen Bar 114J

BEPD	WEPD	YEPD	MILK
-.1	.50	+56	.37
		+95	.26
		+29	.21

D **NEALA TRAVELER 404**
 Calved: 09/03/2004 Bull 15105633 Tattoo: 404
 #N Bar Emulation EXT [AMF-NHF] #Emulation N Bar 5522
#BAR EXT TRAVELER 205 [AMF-NHF] N Bar Primrose 2424
 #12452829 #BAR Queen Traveler 3015 #DHD Traveler 6807 [AMF-NHF]
 Magic Queen 963
 #AAR Really Windy 1205 [AMF-NHF] AAR Windy Ridge 362
#MYSTIC HILL MISS RITO 273 AAR Lady Kelton 2170
 #14503192 Mystic Hill Genesis 055 Gardens Genesis 3151 S1
 Mystic Hill Miss Rito 837

BEPD	WEPD	YEPD	MILK
-.7	.51	+30	.37
		+73	.31
		+31	.21



BT Right Time 24J

B **DSF RIGHT TIME 39U**
 Calved: 10/17/2008 Bull 16422860 Tattoo: 39U
 #+Leachman Right Time #N Bar Emulation EXT [AMF-NHF]
#+BT RIGHT TIME 24J [AMF-NHF] Leachman Erica 0025
 #+13360311 Sitz Everelda Entense 1905 #Traveler 124 GDAR
 #Sitz Everelda Entense 1791
 #Sitz Traveler 8180 [AMF-NHF] #GDAR Traveler 71 [AMF-NHF]
BROOKMEADE DIDO 05 Sitz Everelda Entense 1137
 13718175 #Brookmead Dido 862 Brookmead Regal 520
 #Brookmeade Dido 323

BEPD	WEPD	YEPD	MILK
+.5	.36	+49	.27
		+84	.25
		+18	.21

E **DSF 8T0 24J 5108**
 Calved: 10/10/2005 Bull 15467808 Tattoo: 5108
 #+Leachman Right Time #N Bar Emulation EXT [AMF-NHF]
#+BT RIGHT TIME 24J [AMF-NHF] Leachman Erica 0025
 #+13360311 Sitz Everelda Entense 1905 #Traveler 124 GDAR
 #Sitz Everelda Entense 1791
 #Rito 707 of Ideal 533 70 [AMF-NHF] #RR Rito 707 [AMF-NHF]
+MYSTIC HILL BLACKBIRD 8T0 Skymere of Ideal 312
 +13901500 Mystic Hill Blackbird 423 #VDAR Bando 701
 Miss GAAF 8116 NT 113

BEPD	WEPD	YEPD	MILK
+1.4	.32	+38	.25
		+64	.23
		+19	.21

C **DSF MISSING LINK 813 451**
 Calved: 09/24/2007 Bull 16111466 Tattoo: 813
 OCC Headliner 661H #+OCC Emblazon 854E
OCC MISSING LINK 830M #+OCC Juanada 858F
 14456399 +OCC Dixie Erica 946K #OCC Glory 950G
 +OCC Dixie Erica 816B
 Ginger Hill Treasure 2004 Ginger Hill Treasure 8018
GINGER HILL QUEEN 451 Ginger Hill Dawn 631
 15056499 #Ginger Hill Queen 1505 #BCC Bushwacker 41-93 [AMF-NHF]
 Ginger Hill Queen 9538

BEPD	WEPD	YEPD	MILK
+3.0	.33	+46	.24
		+83	.18
		+16	.13

F **HT RITO 1T8 319 7211**
 Calved: 02/17/2007 Bull 15955383 Tattoo: 7211
 Rito 72 of Ideal 033 #Rito 707 of Ideal 836 71
+RITO TRADITION 1T8 Rito 707 of Ideal 815 70
 +14037290 +Rita 6D52 of Rita 2T6 7174 #Band 116 of Ideal 2118 7174
 +Rita 2T6 of 5H11 Rito 149 [AMF]
 Rito 931 of 85 A63 Ideal 85 of Rito 549 6277
MISS MWS RITO 931 826 319 [AMF] Rito Majesty 5A63 of 809
 14428898 Miss MWS Rito 512 3115 826 MWS G45 122 512
 Black Diamond TT 3115

BEPD	WEPD	YEPD	MILK
+3.9	.32	+42	.20
		+67	.19
		+21	.12

REFERENCE SIRES



Sinclair Net Present Value

G SINCLAIR NET PRESENT VALUE
 Calved: 09/10/2002 Bull 14311951 Tattoo: 2P88

#Gardens Prime Time [AMF-NHF] #RR Traveler 5204 [AMF-NHF]
 #N BAR PRIME TIME D806 [AMF-NHF] #Green Garden Susie 1246 S1
 #12557724 N Bar Miss Emulous A404 #N Bar Emulation Ext Z52
 #N Bar Miss Emulous X3091

#DHD Traveler 6807 [AMF-NHF] #QAS Traveler 23-4 [AMF-NHF]
+IDEAL 4465 OF 6807 4286 [AMF-NHF] #Bemindful Maid DHD 0807
 +12211413 EE 4286 of Ideal 2240 1254 Ee 30 1254 of Ideal 5254 960
 Ee 30 2240 of Ideal 8245 960

BEPD	WEPD	YEPD	MILK
-1.8	.92	+47	.88
		+85	.84
		+29	.65



OCC Homer 650H

H OCC HOMER 650H
 Calved: 02/16/1998 Bull 13235197 Tattoo: 650H

#Basin Rainmaker 654X #Basin Rainmaker DS 380U
+OCC FOCUS 813F Basin Bardolene 423U
 +12739373 Dixie Erica of CH 1019 #PBC 707 1M F0203
 Dixie Erica of CH 615

#DHD Traveler 6807 [AMF-NHF] #QAS Traveler 23-4 [AMF-NHF]
+OCC DIXIE ERICA 816B #Bemindful Maid DHD 0807
 +11770426 Dixie Erica of CH 1019 #PBC 707 1M F0203
 Dixie Erica of CH 615

BEPD	WEPD	YEPD	MILK
-3.5	.92	+29	.89
		+57	.83
		+13	.79



OCC Missing Link 830M

I O C C MISSING LINK 830M
 Calved: 09/16/2002 Bull 14456399 Tattoo: 830M

#+ O C C Emblazon 854E #D H D Traveler 6807 [AMF-NHF]
O C C HEADLINER 661H Dixie Erica of C H 1019
 13235201 #+ O C C Juanada 858F #Basin Rainmaker 654X
 O C C Juanada 709V

#O C C Glory 950G #O C C Exodus 712E
O C C DIXIE ERICA 946K O C C Dixie Erica 971E
 +13890899 + O C C Dixie Erica 816B #D H D Traveler 6807 [AMF-NHF]
 Dixie Erica of C H 1019

BEPD	WEPD	YEPD	MILK
-.4	.87	+49	.81
		+84	.69
		+12	.37



Sinclair Extravagant 6X7

J SINCLAIR EXTRAVAGANT 6X7
 Calved: 02/17/2006 Bull 15380785 Tattoo: 6X7

#Emulation N Bar 5522 #Emulation 31 [DWF-RDF]
#N BAR EMULATION EXT [AMF-NHF] Ankony 8F78 Lass 8F275
 #10776479 N Bar Primrose 2424 #Emulation 31 [DWF-RDF]
 Primrose N Bar 9962

#N Bar Prime Time D806 [AMF-NHF] #Gardens Prime Time [AMF-NHF]
SINCLAIR LADY 2P30 8146 N Bar Miss Emulous A404
 14339768 +Majesty 8146 of 1418 4465 #Ideal 1418 of 8103 4286 [AMF-NHF]
 +Ideal 4465 of 6807 4286 [AMF-NHF]

BEPD	WEPD	YEPD	MILK
+6	.65	+51	.52
		+88	.38
		+18	.22

REFERENCE SIRES

K

DUFF STANDOUT 785

Calved: 01/24/2007 Bull 15934618 Tattoo: 785

DCC New Look 101

+OCC Genesis 872G

DCC 002 OUTLOOK 472

OCC Dixie Erica 814G

14884405 #DCC Merle 002

+OCC Grand Prix 625G
CM Merle 750H

+OCC Hercules 941H [AMF]

Rito 9Q4 of 1H1 Sasquatch [AMF]

OCC LADY BLACKCAP 753L

OCC Juanada 709Z

14024656 OCC Lady Blackcap 822H

#OCC Anchor 771A

OCC Lady Blackcap 755D

BEPD		WEPD		YEPD		MILK	
I+2.0	.05	I+31	.05	I+59	.05	I+20	.05



Duff Standout 785

L

HT RITO 3R9 423 7130

Calved: 01/27/2007 Bull 15961157 Tattoo: 7130

#RR Rito 707 [AMF-NHF]

Rito N Bar

+SINCLAIR RITO LEGACY 3R9 [AMF]

Eriskey of Rollin Rock 3

+14378386 +Ideal 4465 of 6807 4286 [AMF-NHF]

#DHD Traveler 6807 [AMF-NHF]

EE 4286 of Ideal 2240 1254

+Rito Tradition 1T8

Rito 72 of Ideal 033

MISS MWS RITO 1T8 018 423 [AMF]

+Rita 6D52 of Rita 2T6 7174

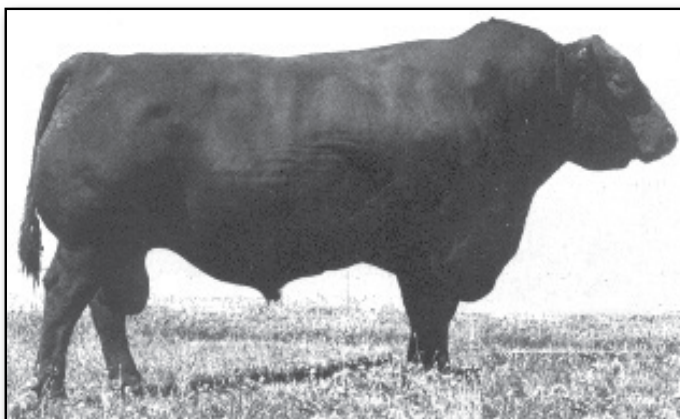
14961783

#Blackbird G 018

#+Rito 549 of Ideal 154 9J9 [AMC]

Arrowhead Blackbird 416

BEPD		WEPD		YEPD		MILK	
+3.3	.34	+37	.24	+63	.23	+17	.12



RR Rito 707

M

SINCLAIR MEMENTO 7RL4

Calved: 01/31/2007 Bull 15644112 Tattoo: 7RL4

#RR Rito 707 [AMF-NHF]

Rito N Bar

+SINCLAIR RITO LEGACY 3R9 [AMF]

Eriskey of Rollin Rock 3

+14378386 +Ideal 4465 of 6807 4286 [AMF-NHF]

#DHD Traveler 6807 [AMF-NHF]

EE 4286 of Ideal 2240 1254

#Papa Rito T Intense DHD 6844

Papa Rito Traveler 4807

+SINCLAIR BLACKCAP 2C7 7856

Blackcap Mc Henry DHD 4810

+14311918 #Papa Blackcap Mc Henry 7856

#Cottontail Maternal POWER464

DHD Blackcap Mc Henry 4839

BEPD		WEPD		YEPD		MILK	
+2.0	.41	+37	.30	+65	.25	+16	.15

O

HT 6216 4215 8224

Calved: 02/17/2008 Bull 16301669 Tattoo: 8224

#Sitz Alliance 6595 [AMF-NHF]

#Sitz Traveler 8180 [AMF-NHF]

HT 383 6595 6216

#Sitz Barabamere Jet 2698

16299866

+DCC Ideal 383 of Ext 7220

#N Bar Emulation EXT [AMF-NHF]

IDEAL7220 Landmark 5215 4184

DCC Rito Prime 115 [AMF-NHF]

#Rito 616 of 4B20 6807 [AMF-NHF]

MISS MWS RITO 115 625 4215

14962288

Miss MWSWW 3D14 625

DCC Rita 482 of D806 185

#Westwind Rito 8503 DJH 019 [AMF-NHF]

Miss MWS 191 0N8 3D14

BEPD		WEPD		YEPD		MILK	
+5.2	.32	+45	.20	+91	.20	+28	.12

N

HT RITO OPEN RANGE 2122 718

Calved: 01/17/2007 Bull 15961161 Tattoo: 718

#Rito 616 of 4B20 6807 [AMF-NHF]

#DHD Traveler 6807 [AMF-NHF]

SINCLAIR OPEN RANGE 2Q23 [AMF-NHF]

+Rita 4B20 of 0FB1 Bando

14357467 SCC Majesty K024 853

#N Bar Prime Time D806 [AMF-NHF]

Majesty 853 of 5439 4465

Rito 931 of 85 A63

Ideal 85 of Rito 549 6277

MISS MWS RITO 931 7112 2122 [AMF]

Rito Majesty 5A63 of 809

14334372 Miss MWS 033 5217 7112

#Ideal 033 of 7365 8263

Miss MWS C024 231 5217

BEPD		WEPD		YEPD		MILK	
+1.3	.35	+43	.26	+77	.24	+23	.16



Sinclair Open Range 2Q23



Suggested* Sale Terms and Conditions (American Angus Association – June 10, 2005)

UNLESS OTHERWISE EXPRESSLY STATED IN THESE SALE TERMS AND CONDITIONS OR ANY OTHER WRITTEN AGREEMENT BETWEEN THE PARTIES RELATING TO THE SALE OF ANGUS CATTLE UNDER THESE SALE TERMS AND CONDITIONS, SELLER MAKES NO OTHER WARRANTIES, EXPRESS OR IMPLIED, INCLUDING ANY IMPLIED WARRANTY OF MERCHANTABILITY OR FITNESS FOR A PARTICULAR PURPOSE, EVEN IF SUCH PURPOSE IS KNOWN TO THE PARTIES.

THE REMEDIES PROVIDED IN THESE SALE TERMS AND CONDITIONS ARE THE EXCLUSIVE REMEDIES OF THE BUYER, OR ANY PARTY CLAIMING THROUGH THE BUYER, AND UNDER NO CIRCUMSTANCES WILL THE SELLER BE LIABLE FOR ANY INCIDENTAL, INDIRECT, SPECIAL, CONSEQUENTIAL, PUNITIVE OR EXEMPLARY DAMAGES UNDER ANY INDEMNITY PROVISION OR OTHERWISE.

TERMS OF SALE

Bidding

1. Each animal will be sold to the highest bidder. The person in charge will settle any disputes as to bids, and his decision on such matters will be final.

Announcements

1. If there is any inconsistency in the terms of any sale book, supplement sheet or day-of-sale announcement, (i) the day-of-sale announcement will control over both the supplement sheet and the sale book, and (ii) the supplement sheet will control over the sale book.

Cash Sale

1. All sales are for cash unless satisfactory credit arrangements, including any possible reservation of security interest by the vendor, have been made with the vendor prior to sale.

Buyer's risk

1. The risk of loss and injury of each animal passes to the buyer as soon as it is sold; but it is the obligation of the seller to ensure that animals are fed and cared for free of charge to the buyer until loaded for shipment or until the expiration of 48 hours after the sale, whichever occurs sooner.

Identification

1. The seller must ensure that each animal has a readable permanent identification mark (e.g., tattoo, hot-iron brand or freeze brand) corresponding to its registration.
2. The buyer must check all permanent identification marks for accuracy.
3. In those cases where a nickname is used by the seller, the nickname must also be accompanied by the official registered name and number of the animal.

Certificate of registration

1. A transferred certificate of registration must be furnished by the seller free of charge to the buyer for each animal within 45 days following the later of the date of sale and receipt of full payment.

Artificial insemination (AI) service certificates

1. Upon the buyer's request, AI Service Certificates must be furnished by the seller free of charge to the buyer for all females bred artificially to bulls not owned by the seller.

GUARANTEES

Health

1. Unless otherwise announced, the seller guarantees that all animals are eligible for interstate shipment as required by federal regulations.

Conformance with registration

1. The seller guarantees that all animals are registered under the rules of the American Angus Association.
2. The seller guarantees to the buyer that all animals conform to the registration certificate as entered in the Herd Book of the American Angus Association.

Pedigree

1. The seller guarantees to the buyer that the pedigree and performance data of all animals, as represented in any sales materials (including any sale book, supplement sheet or day-of-sale announcement), is accurate.
2. In those cases where a commonly understood nickname is used by the seller, the seller guarantees the pedigree of the animal based on the commonly understood nickname.

Sex

1. Unless otherwise represented by the seller, there are no guarantees that offspring will be of a particular sex.

Breeding guarantees

1. The seller guarantees that all bulls are breeders, but only if such bulls are at least 12 months old at the time of sale and have not been allowed to run with the herd until at least 14 months of age. A bull that settles a cow by natural service and passes a fertility test made by competent veterinarians mutually agreed upon by the buyer and the seller, during any six-month period of trial (provided for in paragraph 2 of the section entitled "Options and privileges of return or adjustment") will be considered a breeder. Unless otherwise agreed by the buyer and the seller, the seller makes no guarantees with respect to the ability to freeze semen.
2. The seller guarantees that all animals are breeders, with the exception of: (a) calves under 12 months of age at the time of the sale; (b) animals shown after the sale has occurred (in such cases, the breeding guarantees, if any, will be those guarantees as are agreed upon between the seller and the buyer); (c) injury or disease occurring after the sale; and (d) gross negligence or willful misconduct on the part of the buyer.
3. "Safe-in-calf" females are guaranteed by the seller to have been examined by a competent veterinarian and determined to be in calf.
4. "Served" females are not guaranteed to be in calf.
5. "Pasture-bred" females have been exposed but are not guaranteed to be in calf.
6. "Open" females have not been served and are guaranteed by the seller to be without calf.
7. Donor females:
a. Unless otherwise agreed by the buyer and the seller, a female that has been used in an embryo transfer program is not guaranteed to be a breeder after the date of the sale.
b. Unless otherwise agreed by the buyer and the seller, a female is not guaranteed to be a breeder after the date of the sale, when that female is to be used, or attempted to be used, in an embryo transfer program.
8. The seller makes the following guarantees with respect to all "pregnant recipients": (i) that the female is pregnant, (ii) that the resulting calf is of the pedigree represented, and (iii) that the resulting calf is of the sex represented (if so represented).

Genetic defect guarantee

1. All animals are guaranteed by the seller not to produce a calf with the following defects for a period of two years after the date of sale: Dwarfism, Osteopetrosis (marble bone disease), Double Muscling, Syndactyly (mule foot) and Heterochromia Irides (White Eye).
2. The buyer must notify the seller in writing immediately upon the birth of a calf suspected of being defective or immediately after determination is made that such calf is defective.
3. The seller at his expense will be permitted, and provided with reasonable opportunity, to obtain DNA material of an alleged defective calf and its sire and dam for the purpose of DNA-marker analysis to establish parenthood.
4. The animals will be returned by the buyer to the seller at the buyer's expense (unless prohibited by the health requirements of the seller's state).

5. The return of the purchase price in connection with a defect-producing animal will be deemed full satisfaction and settlement.
6. The buyer and seller agree to fully and promptly comply with all rules of the American Angus Association relating to genetic defects.
7. If there is a dispute as to whether or not a calf is defective, the American Angus Association will make the final determination.
8. Registration certificates issued after January 30, 1979, for animals that, prior to issuance of the certificate, had been reported and verified as carriers of recessive genetic defects or genetic factor or had tested free of certain genetic defects or genetic factors contain the following codes relative to such defect:
S - Syndactyly
H - Double muscling
D - Dwarfism
M - Osteopetrosis
HI - Heterochromia Irides
HG - Horn gene
R - Red
X - Multiple defects, check list for kind
F - Tested for defect printed without producing abnormal calves
GDF - Produced 35 or more calves from daughters without a genetic defect or genetic factor
WT - Wild Type Color Gene

The absence of any such notation on a pedigree of an animal, in a sale book, does not establish that the animal in question is not a carrier of any such genetic defect or genetic factor.

Semen

1. Unless otherwise agreed by the buyer and the seller, with respect to the sale of semen the seller makes no guarantees with respect to the performance or characteristics of such semen and buyer is purchasing such semen "as is."

Embryos

Unless otherwise agreed by the buyer and the seller, with respect to the sale of embryos the seller makes no guarantees with respect to the performance or characteristics of such embryos and buyer is purchasing such embryos "as is."

Options and privileges of return or adjustment

1. Except as provided in paragraphs 2 and 3 of this section, all claims for adjustment or refund must be made in writing on or before the later of (i) six months after the sale date and (ii) the date on which the animal reaches 30 months of age.
2. All claims relating to genetic defects will be handled in accordance with the section "Genetic defect guarantee."
3. All claims relating to the misrepresentation of service sire and all claims relating to paragraphs 10 and 11 of this section must be made in writing on or before the second anniversary of the date of sale.
4. If an animal is claimed to be a non-breeder, the animal may be returned to the seller if in good condition and complying with the health requirements of the seller's state. The seller is entitled to six months trial following the return of the animal in which to prove that the animal is a breeder. If at the end of the six-month period the seller is unable to prove the animal is a breeder, the seller must, at the option of the buyer, replace the animal with another of equal value or refund the purchase price. The return of the full purchase price will be deemed full satisfaction and settlement. Any expense incurred for transporting an animal claimed to be a non-breeder will be the responsibility of the buyer, except that the seller will be responsible for transportation costs in excess of the distance between the buyer's farm and the location where the sale took place. If the seller proves the animal to be a breeder, it will be the obligation of the buyer to take delivery of the animal and pay all transportation expenses.
5. If a female sold as "safe in calf" proves not to be in calf, the buyer may receive service from the bull previously used, if available. If the bull is not available, the seller must make a satisfactory adjustment on the purchase price to the buyer or, at the buyer's option, refund the purchase price upon return of the animal to the farm of the seller. Any adjustment provided for in this paragraph 6 will absolve the seller from further liability, except in if such female proves to be a non-breeder. If a female represented as "safe in calf" to a certain bull at the time of sale proves to have been bred to a different bull, the seller must make a satisfactory adjustment on the purchase price to the buyer or, at the buyer's option, refund the purchase price upon return of the animal to the farm of the seller (adjustments will not be considered to be a breeding fee or an allocation of the purchase price to any unborn calf).
6. If a female sold as "open" proves to be with calf, the buyer may return the animal to the farm of the seller prior to calving for a refund of the full purchase price or for another animal of equal value, whichever is acceptable to the buyer. The Seller is responsible for all transportation expenses.
7. Cows with calves at their side are presumed to be breeders with no further fertility guarantee.
8. White skin or hair must not be painted or altered. If such painting or alteration has occurred, the buyer may return the animal to the farm of the seller for a refund of the full purchase price or for another animal of equal value, whichever is acceptable to the buyer.
9. If an animal (including the offspring of a pregnant recipient) is sold and at a later date proves not to have been eligible for registration under the rules of the American Angus Association, the seller must make a satisfactory adjustment on the purchase price to the buyer, or at the option of the buyer, refund the purchase price upon the return of the animal to the farm of the seller.
10. If (i) an animal is sold (including the offspring of a pregnant recipient) and through DNA-marker-typing is proven to have incorrect parentage, as represented by the certificate of registration, and for which parentage can be determined, or (ii) the resulting calf of a pregnant recipient is not of the sex represented, the seller is obligated to make a satisfactory adjustment on the purchase price to the buyer or, at the buyer's option, refund the purchase price upon the return of the animal to the farm of the seller.

11. Except as provided in paragraphs 4 and 6 of this section, all transportation expenses incurred will be the responsibility of the buyer, except that the seller will be responsible for transportation costs in excess of the distance between the buyer's farm and the location where the sale took place.

Retention of genetic material

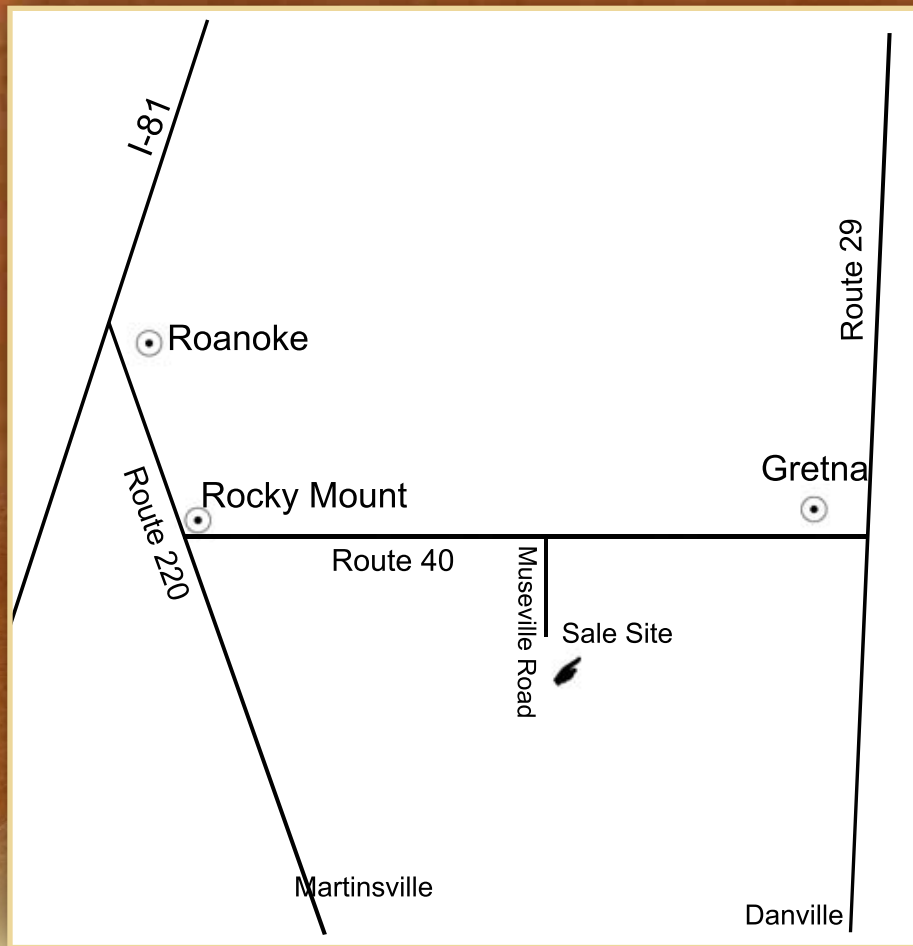
1. Unless otherwise agreed in writing by the seller and the buyer, the seller will not retain any genetic material of any animal (including embryos and semen) for the purpose of cloning.

Miscellaneous

1. The above terms and conditions of sale constitute a contract between the buyer and the seller of each animal and are equally binding upon both parties. Each sale or resale of an animal constitutes a separate transaction.
2. Neither the sponsor or sponsors, the sale manager, nor any other person connected with the management of the sale, assumes any liability, legal or otherwise.
3. These sale terms and conditions and all rights, obligations and duties arising hereunder and all disputes arising hereunder will be construed in accordance with, and governed by, the laws of the state in which the sale of the animal or animals occurs, without giving effect to such state's choice of law rules.

* For voluntary consideration and use by sellers in their independent business judgment.

MAP AND DIRECTIONS



DIAMOND S CUSTOMERS SPEAK OUT

Terry Ryan, The Ohio Feedlot Inc., South Charleston, OH

I purchased a load of eight weight Angus and Angus cross steers from Diamond S Farms last October, sight unseen. These cattle were exactly as Eddie represented them. They gained 3.8 lbs/day, graded 91.3% choice, 2% prime with 50% qualifying for Certified Angus Beef. We never pulled any for health issues. This is the quality of feeder cattle that we can afford to pay a premium for.

Steve & David Mitchell, Mitchell Farms, VA

We purchased the top two performing bulls from Diamond S Farms last year. Tobacco is our main business, so we don't have a lot of time to devote to our cattle program. They must be trouble-free. Eddie and Matt helped us pick out a low-birth EPD bull with moderate growth to use on our heifers and a moderate birth EPD bull with maximum growth for our cows. Both bulls serviced our cows and heifers while maintaining adequate body condition. The calves came easy without trouble and are very impressive.

Once Creek Farm, David Cundiff

We have been very satisfied with the Virginia Premium Assured heifers that we have purchased from Diamond S Farms for the last 3 years. These heifers all calved unassisted, maintained their condition and bred back on time. We can't ask for anything more.



FIRST CLASS FIRST CLASS FIRST CLASS FIRST CLASS FIRST CLASS



5815 N. Valley Pike
Harrisonburg, VA 22802

PRST First Class
US Postage
PAID
Boelte-Hall, Inc.
66205

FIRST CLASS MAIL

FIRST CLASS FIRST CLASS FIRST CLASS

FIRST CLASS FIRST CLASS FIRST CLASS

Diamond S Farms
Sustainable Genetics
PRODUCTION SALE

May 1, 2010 • 1:00 PM

Chatham, Virginia
(Between Roanoke & Gretna)



GUEST CONSIGNOR
Hilltop Farms, Christiansburg, Virginia